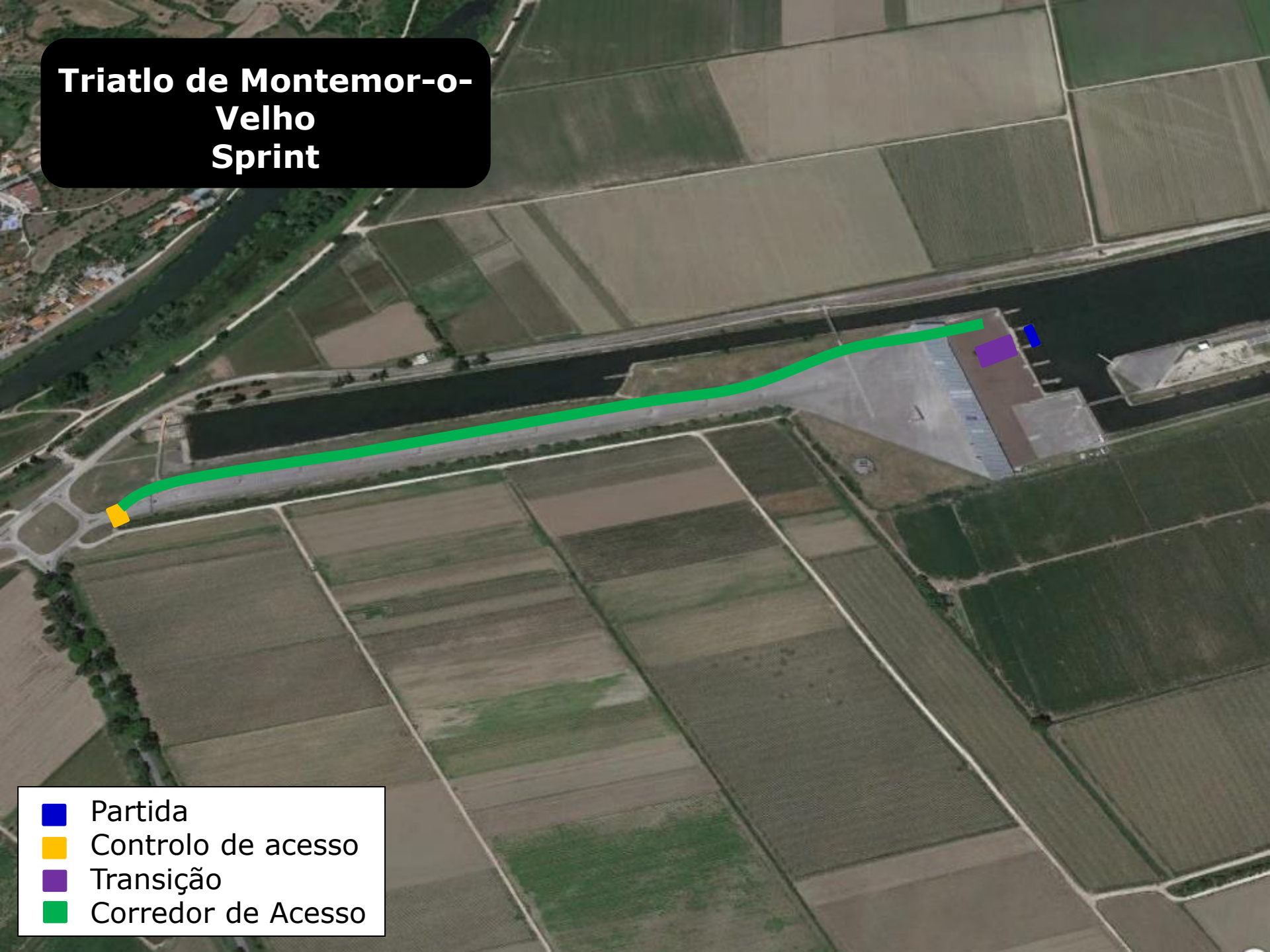






Triatlo de Montemor-o-Velho Sprint



-  Partida
-  Controlo de acesso
-  Transição
-  Corredor de Acesso

Transição



- Transição
- grades
- 1ª transição das mangas 1, 5 e 9
- 2ª transição das mangas 1, 5 e 9
- 1ª transição das mangas 2, 6 e 10
- 2ª transição das mangas 2, 6 e 10
- 1ª transição das mangas 3 e 7
- 2ª transição das mangas 3 e 7
- 1ª transição das mangas 4 e 8
- 2ª transição das mangas 4 e 8

Natação 750m

- Partida
- Meta
- Transição

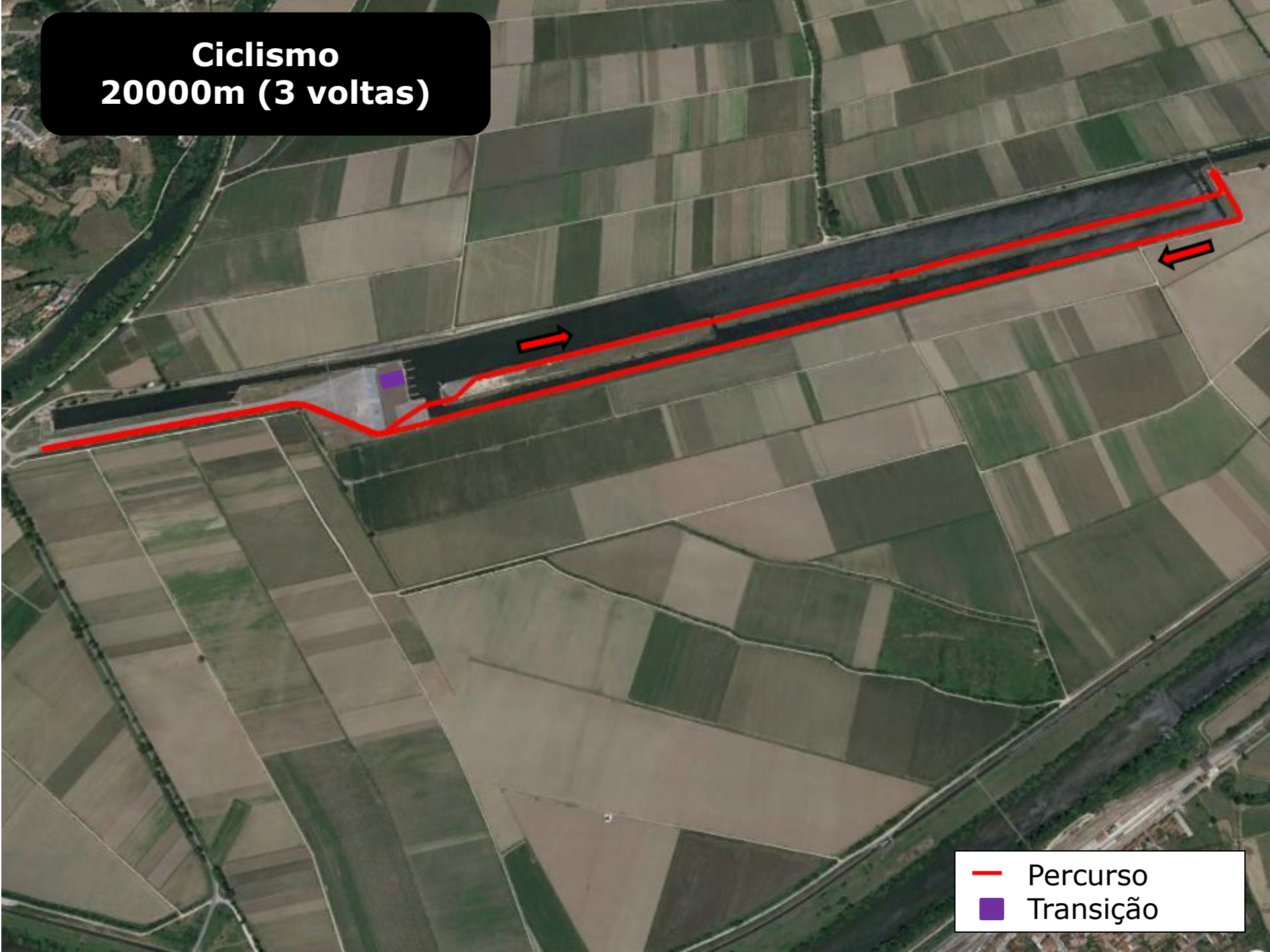


1ª Transição



- Meta
- Natação
- Ciclismo
- Transição

Ciclismo
20000m (3 voltas)







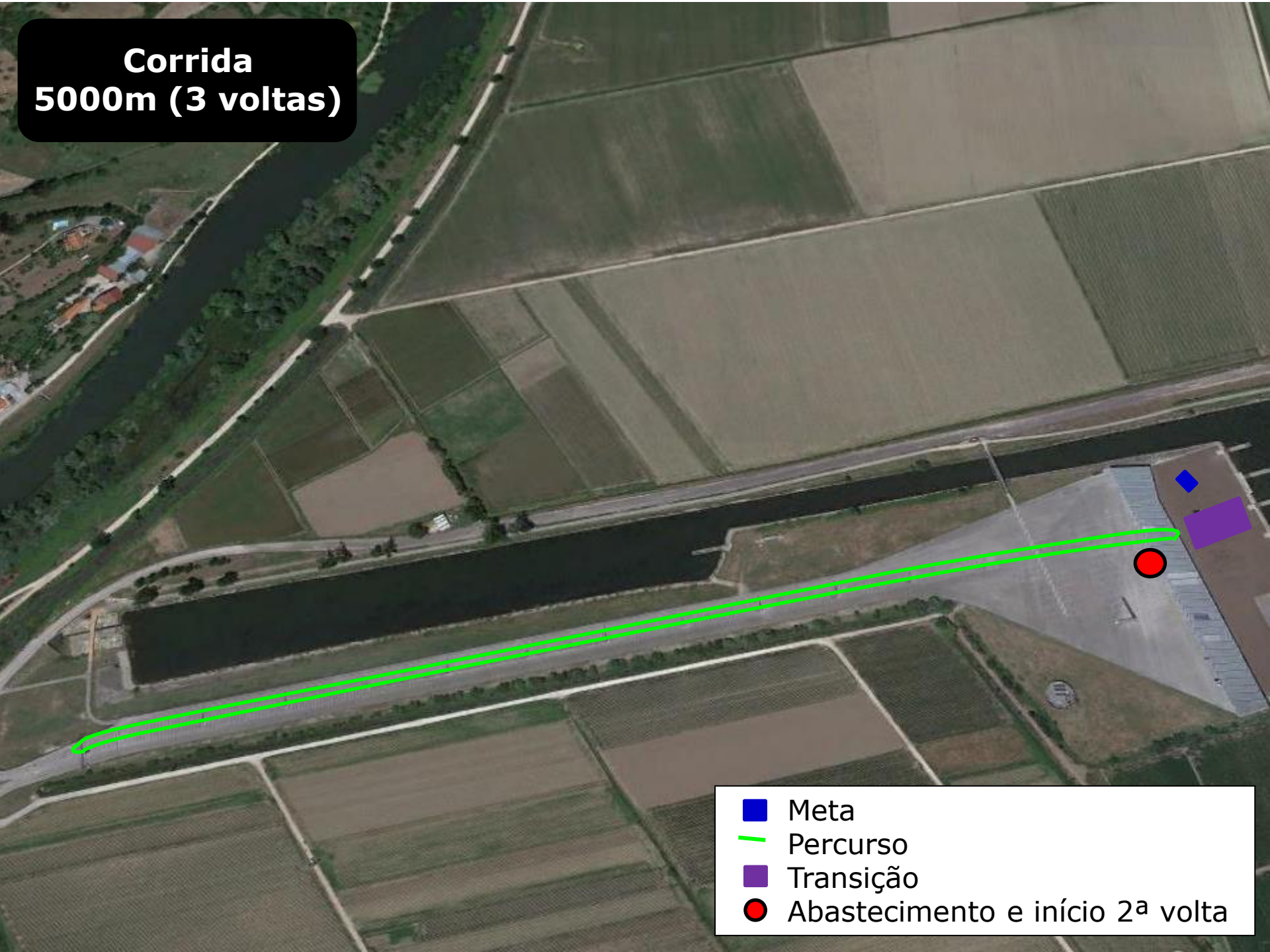
- Percurso
- Transição

2ª Transição

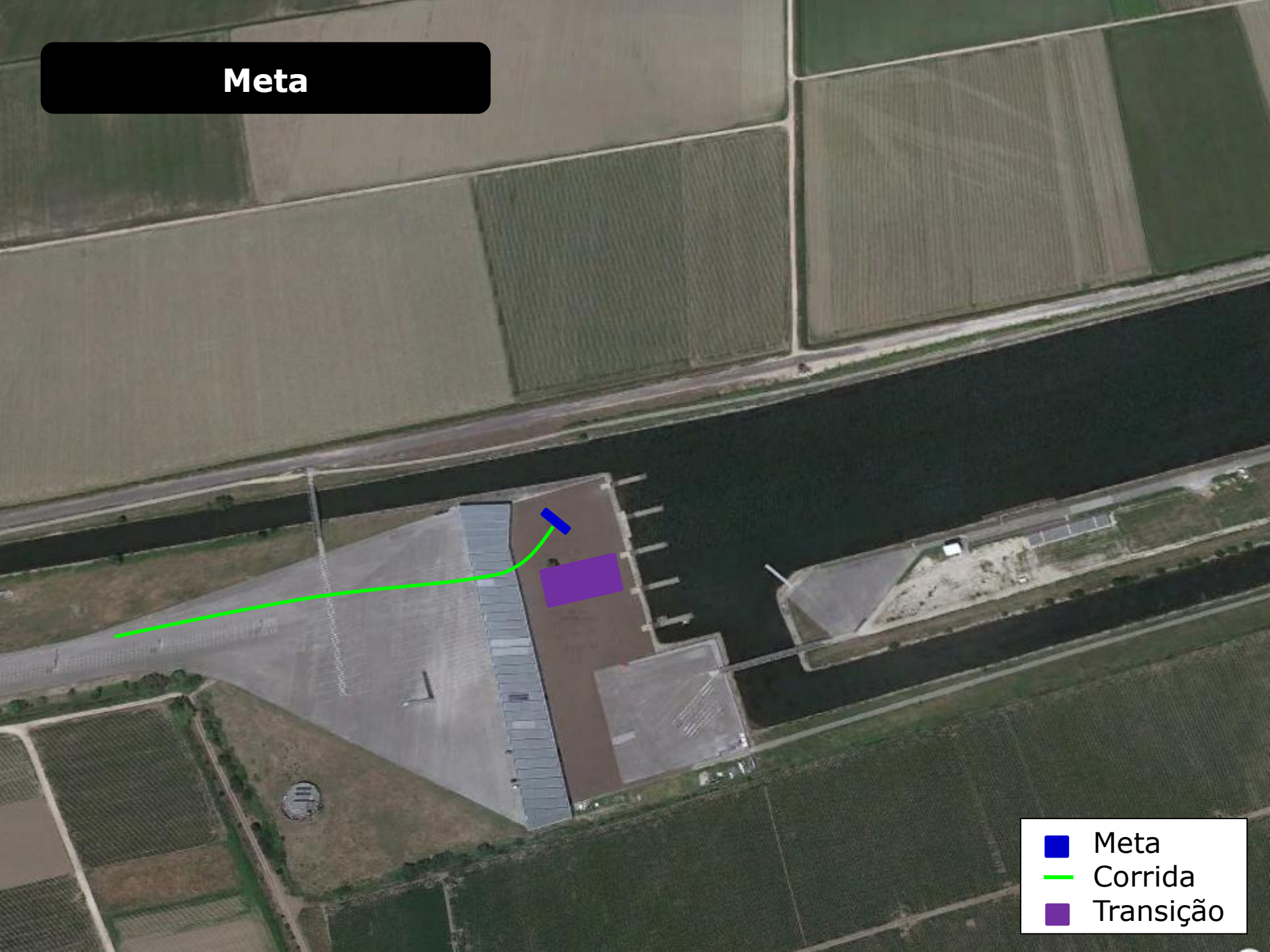
- 
- The image shows an aerial view of a sports facility, likely a triathlon center, situated near a large body of water. The facility includes a large building with a grey roof and a paved area. A legend in the bottom right corner identifies the following elements:
- Meta (Blue square)
 - Ciclismo (Red line)
 - Corrida (Green line)
 - Transição (Purple square)
- The legend is located in the bottom right corner of the image, with a white background and black text. The items are listed vertically, each with a colored square to its left: a blue square for 'Meta', a red line for 'Ciclismo', a green line for 'Corrida', and a purple square for 'Transição'.

**Corrida
5000m (3 voltas)**

-  Meta
-  percurso
-  Transição
-  Abastecimento e início 2ª volta



Meta



- Meta
- Corrida
- Transição