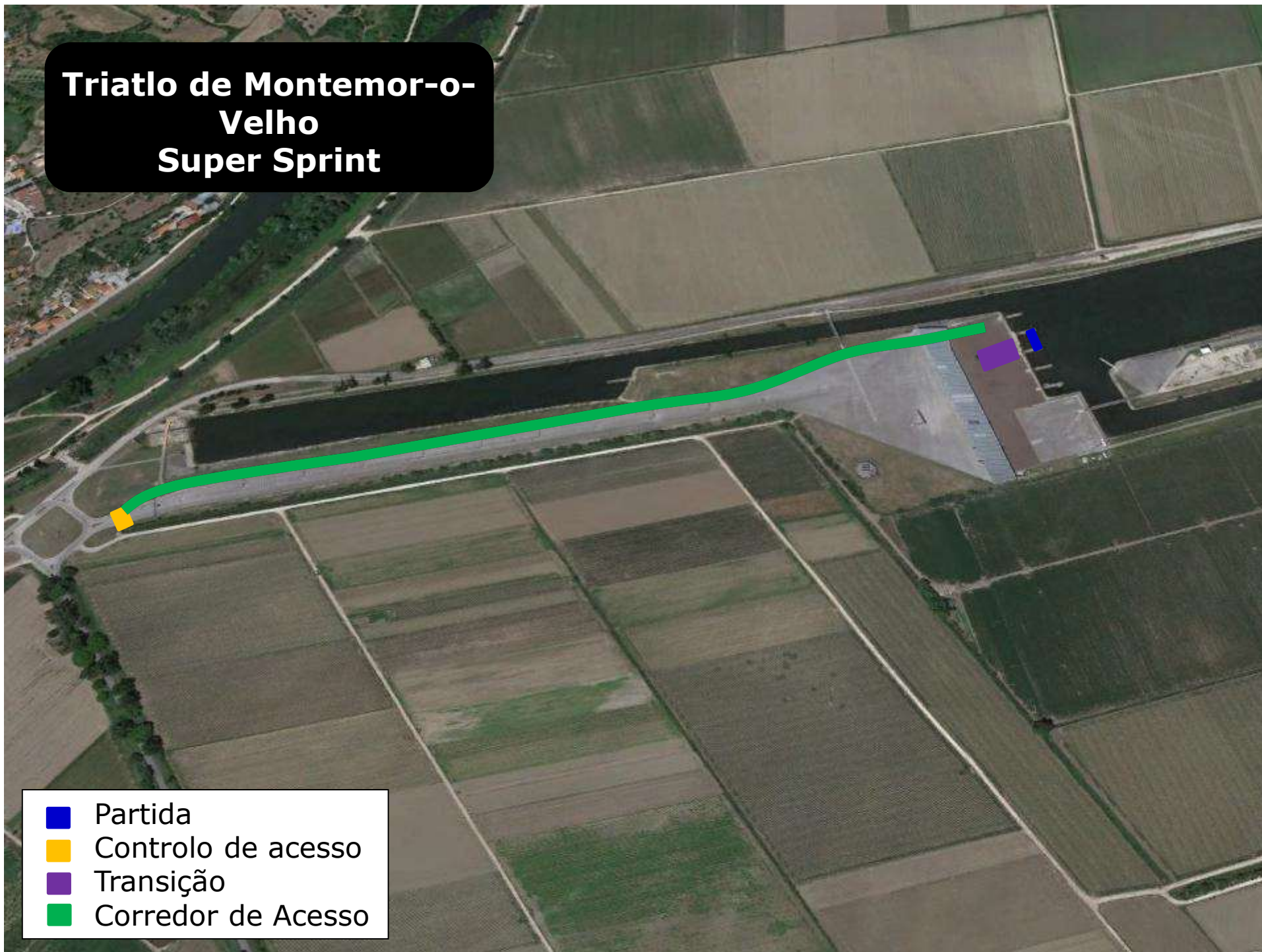
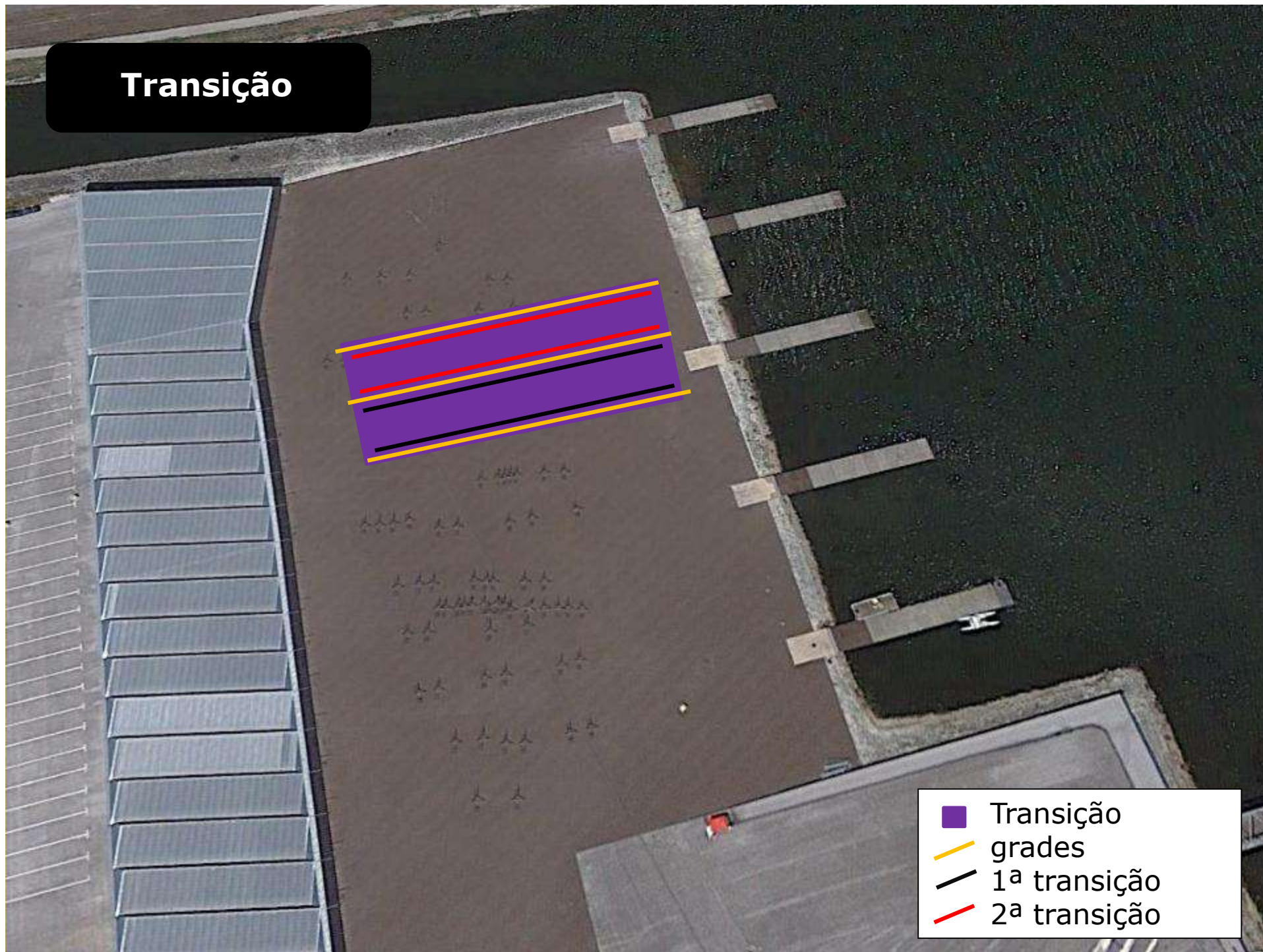


Triatlo de Montemor-o-Velho Super Sprint



- Partida
- Controlo de acesso
- Transição
- Corredor de Acesso

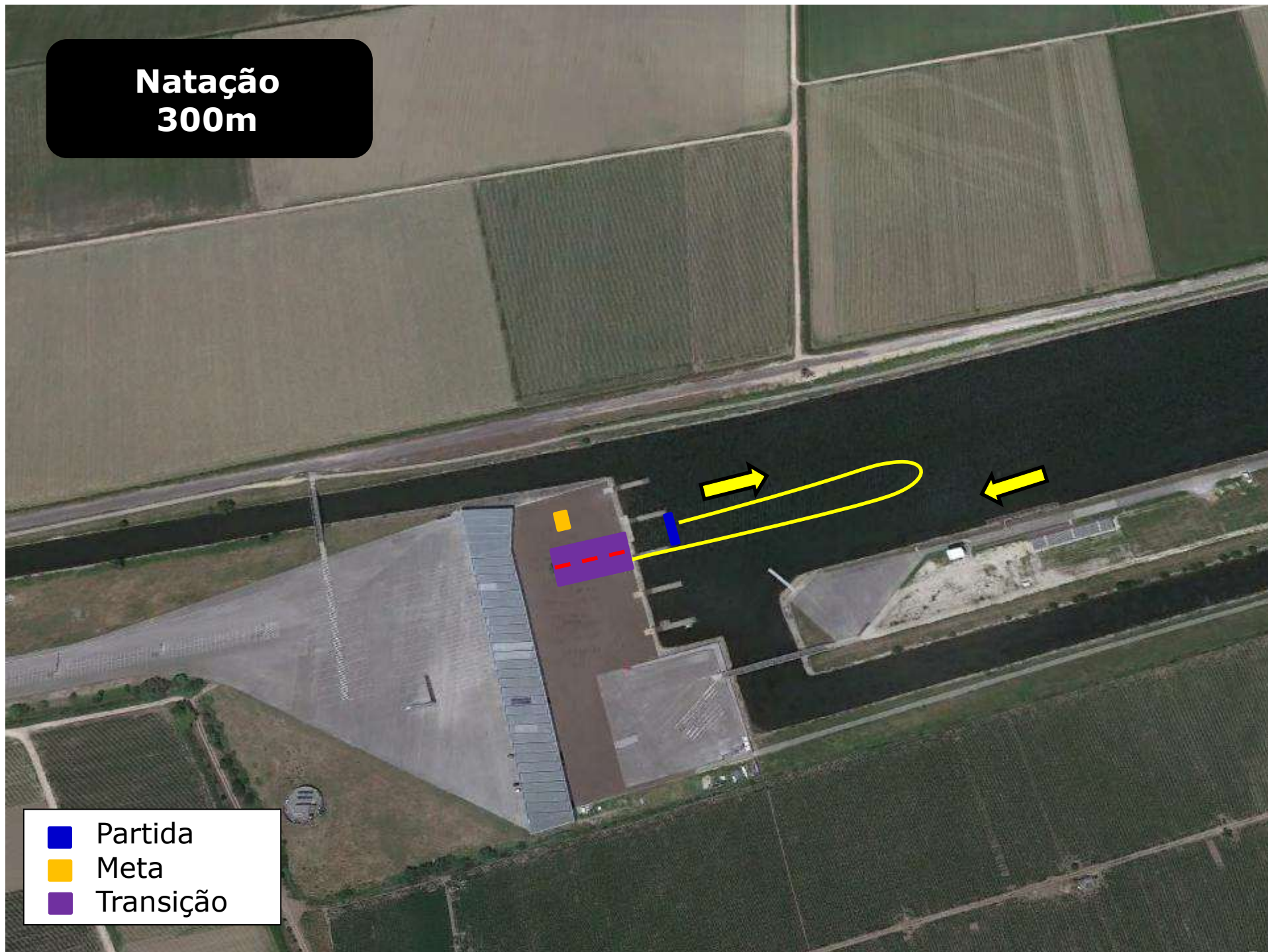
Transição



- Transição
- grades
- 1ª transição
- 2ª transição

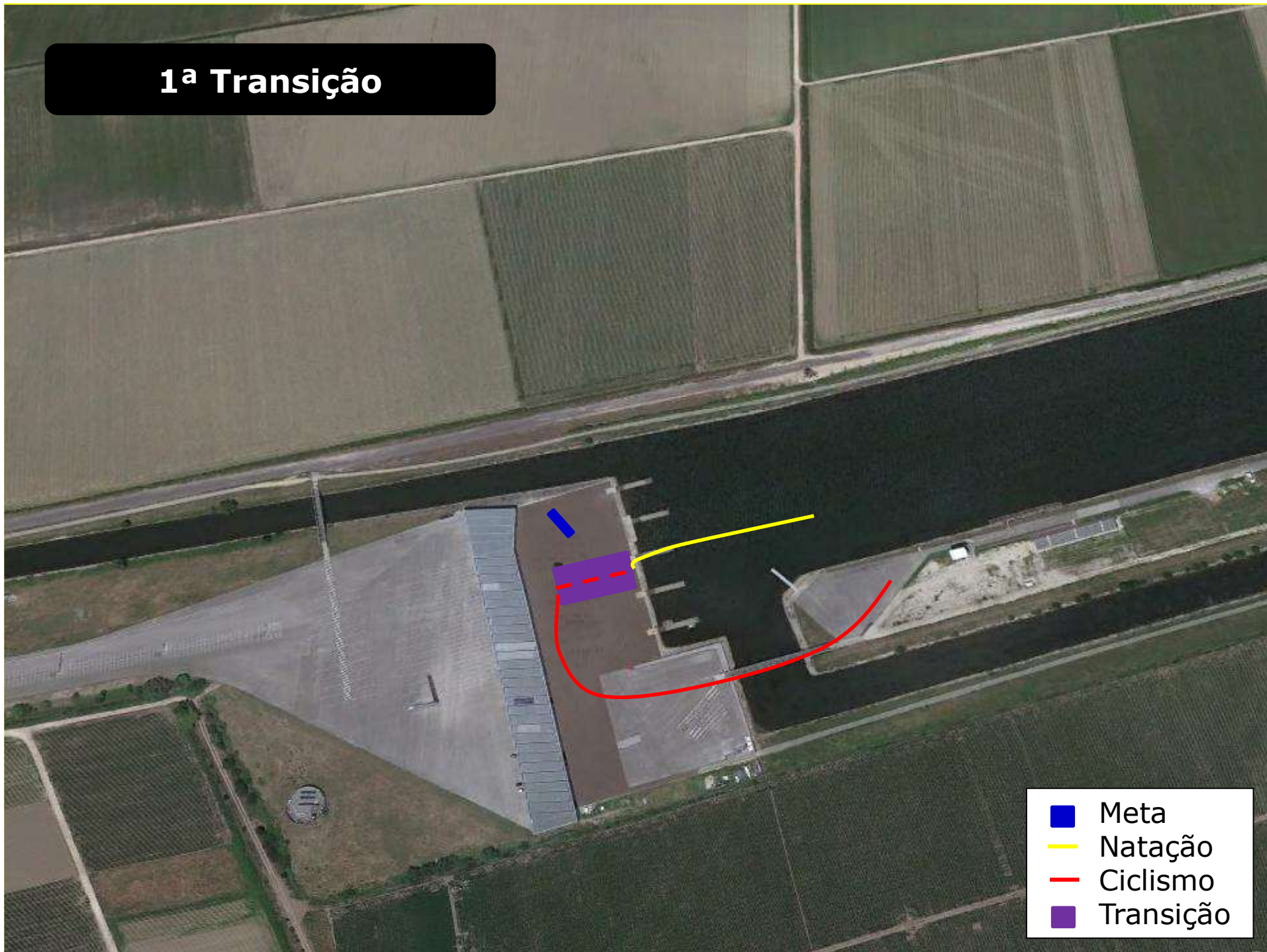
Natação 300m

- Partida
- Meta
- Transição

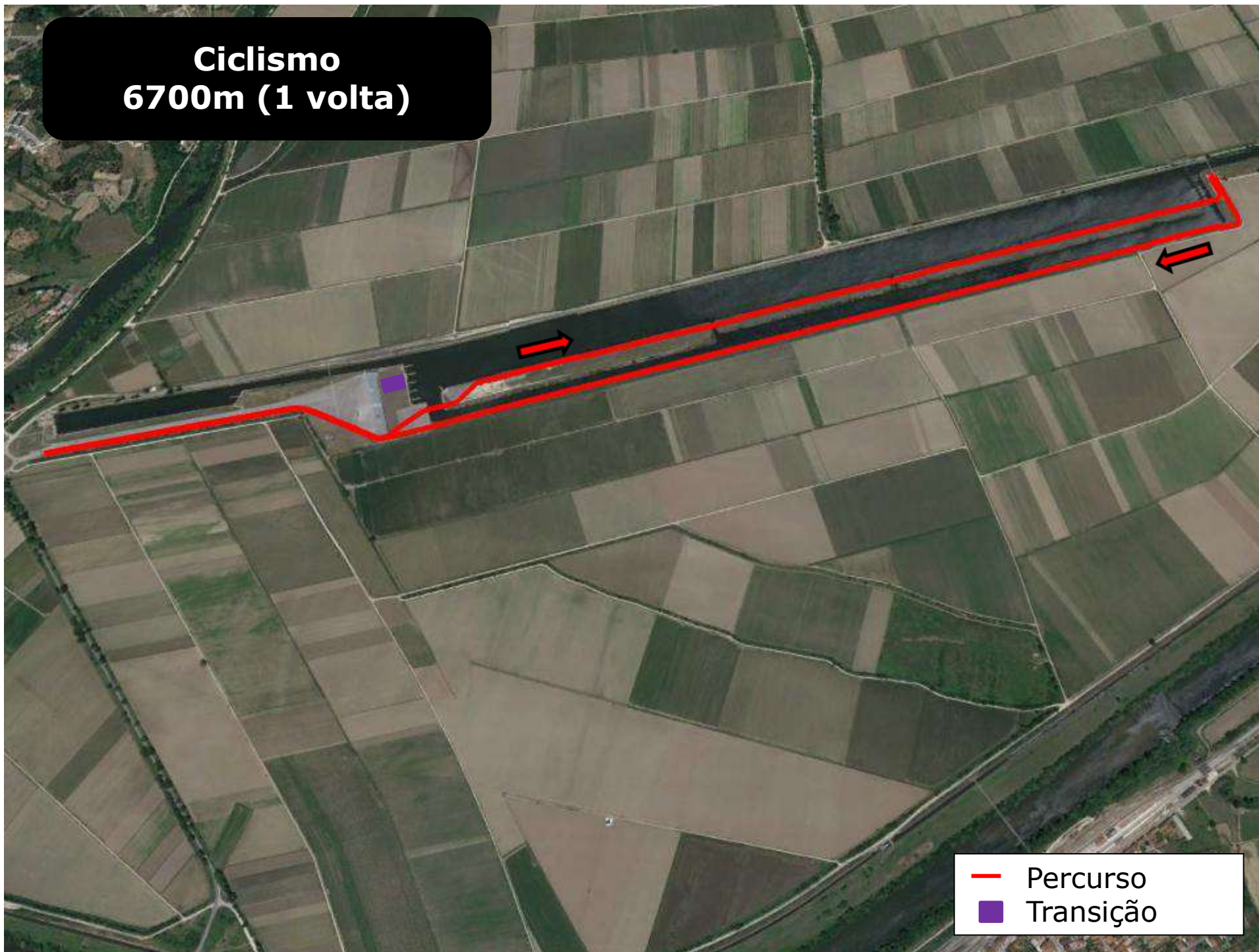


1ª Transição

- Meta
- Natação
- Ciclismo
- Transição



**Ciclismo
6700m (1 volta)**



- Percurso
- Transição

2ª Transição

- 
- The image is an aerial photograph of a sports facility, likely a triathlon center, situated next to a large body of water. The facility includes a large grey-roofed building, a paved area, and a smaller structure. A legend in the bottom right corner identifies four key elements: a blue square for 'Meta' (Finish), a red line for 'Ciclismo' (Cycling), a green line for 'Corrida' (Running), and a purple square for 'Transição' (Transition). The red line starts at the transition area, loops around the building, and ends at the finish line. The green line starts at the transition area and loops around the building. The blue square is located at the end of the red line. The purple square is located at the start of the red line.
- Meta
 - Ciclismo
 - Corrida
 - Transição

**Corrida
1700m (1 volta)**



- Meta
- Percurso
- Transição
- Abastecimento

Meta

- Meta
- Corrida
- Transição

