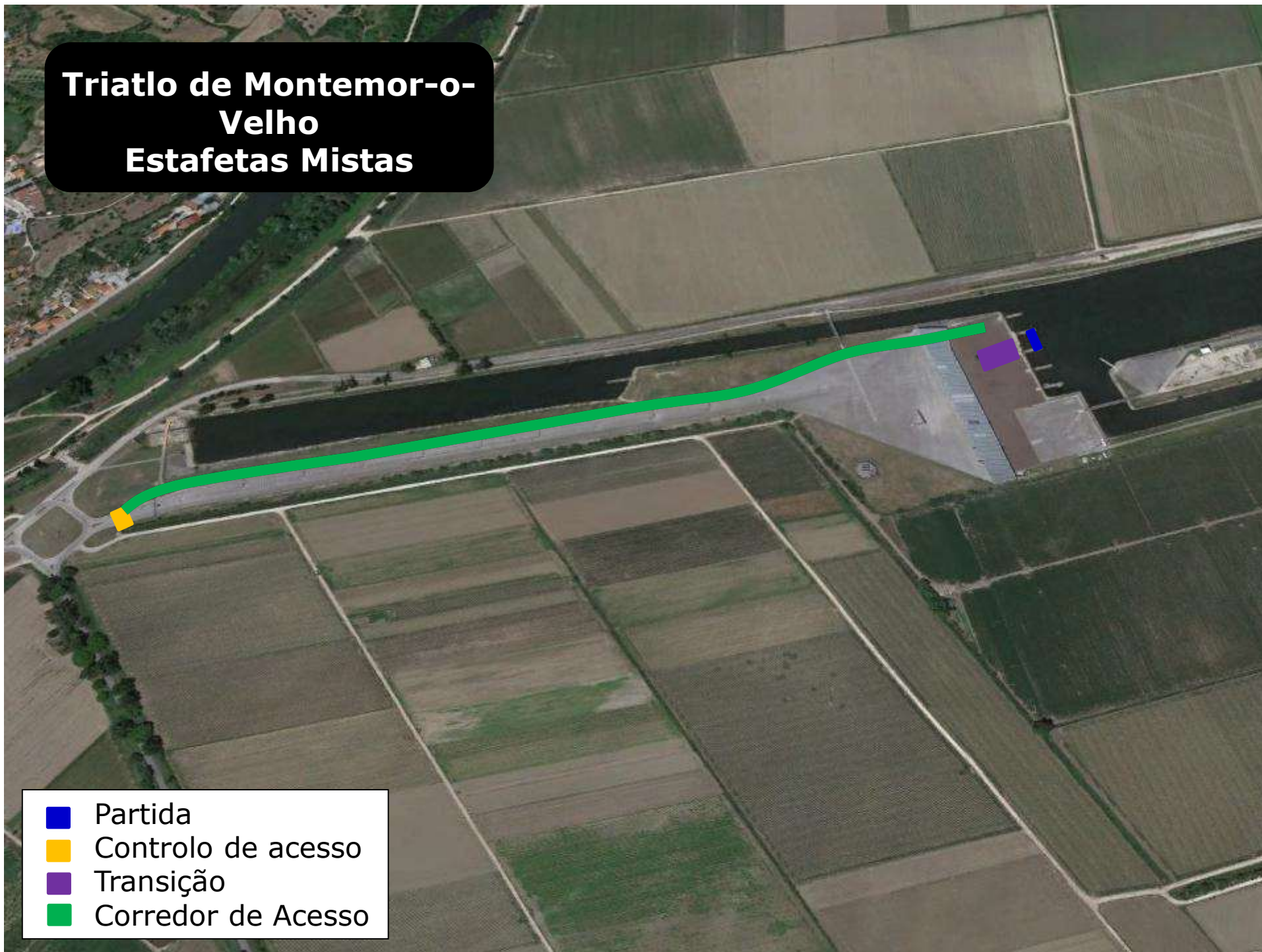


Triatlo de Montemor-o-Velho Estafetas Mistas

- Partida
- Controlo de acesso
- Transição
- Corredor de Acesso



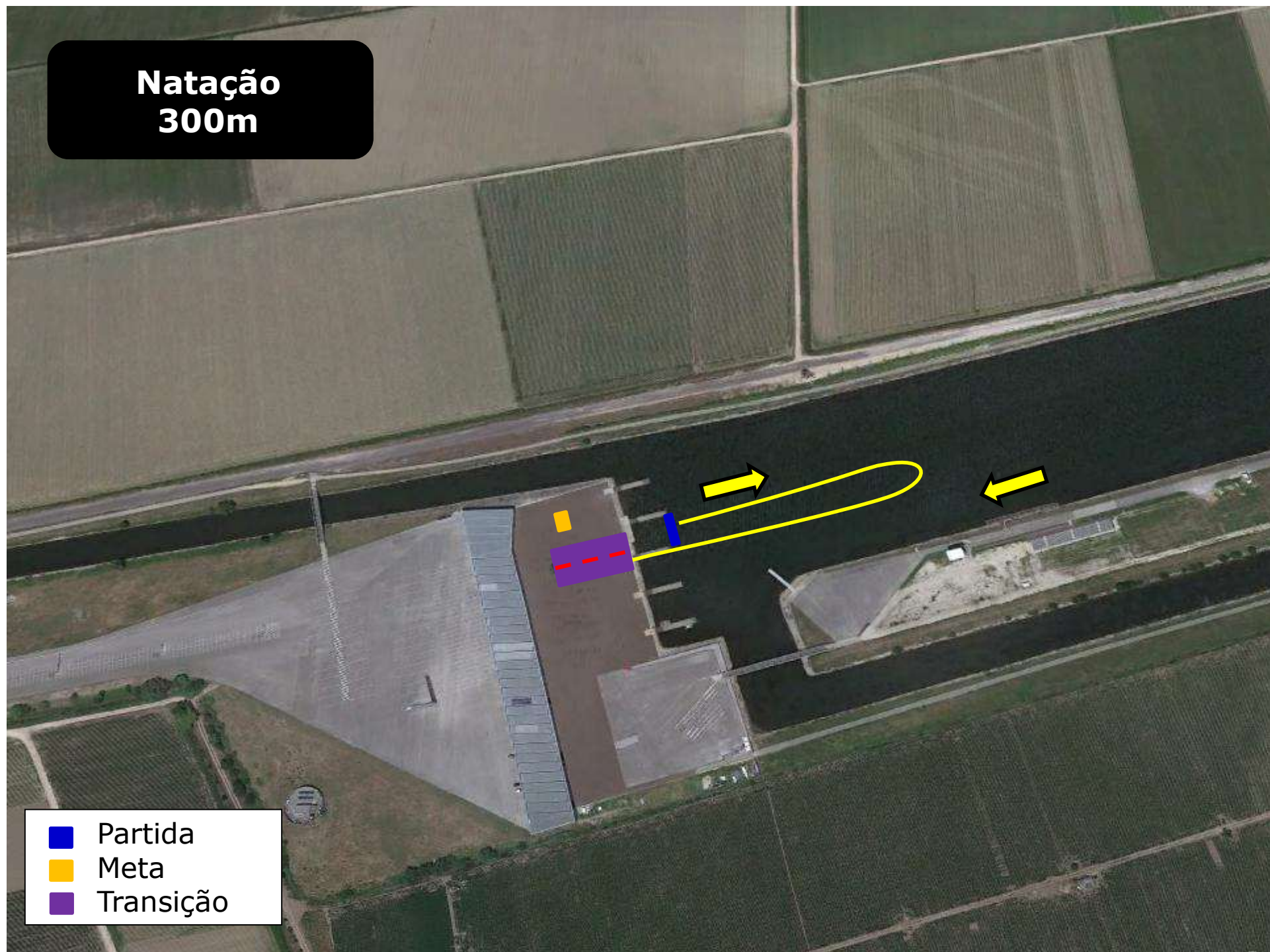
Transição



- Transição
- grades
- 1ª transição
- 2ª transição

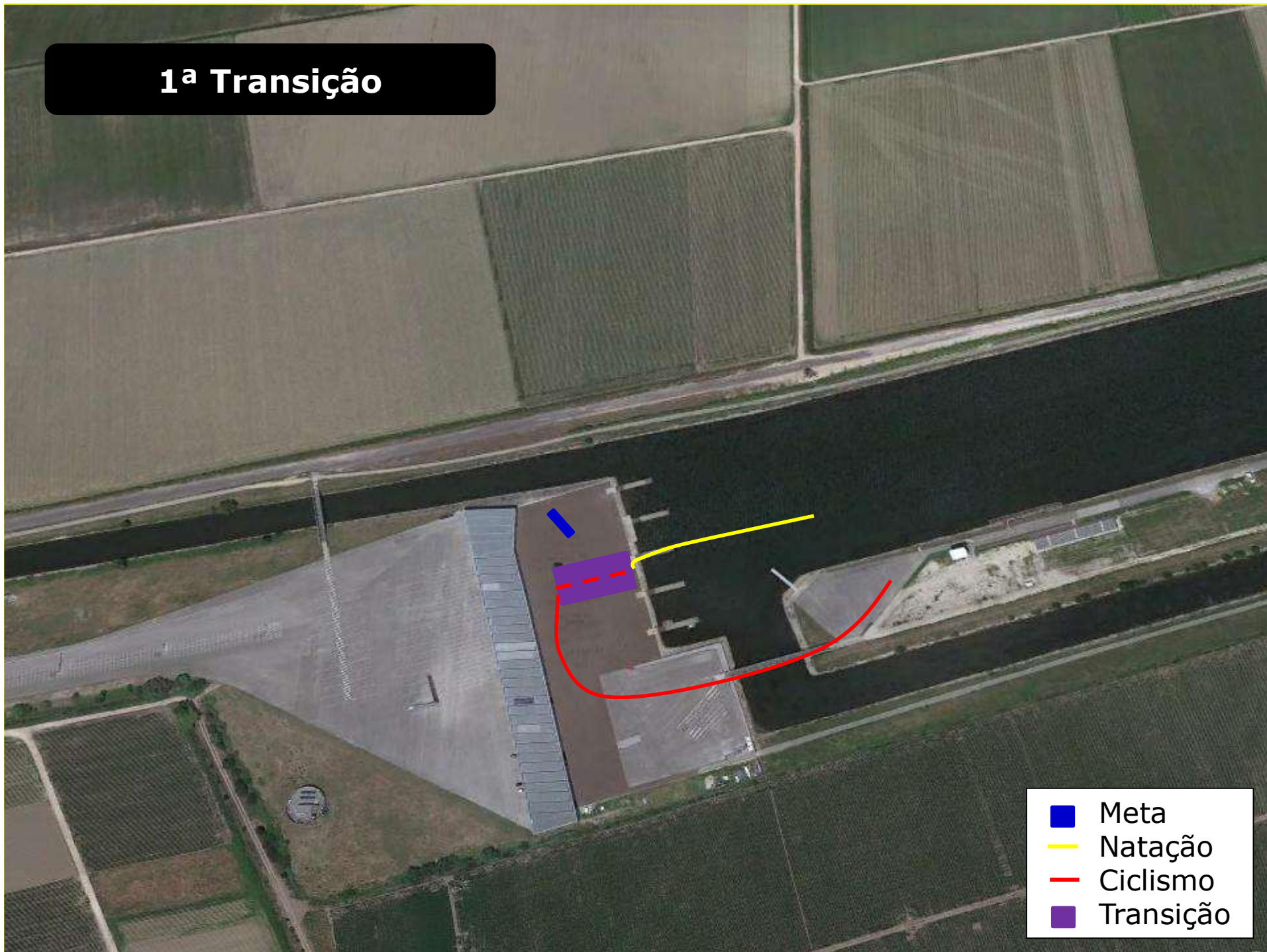
Natação 300m

- Partida
- Meta
- Transição

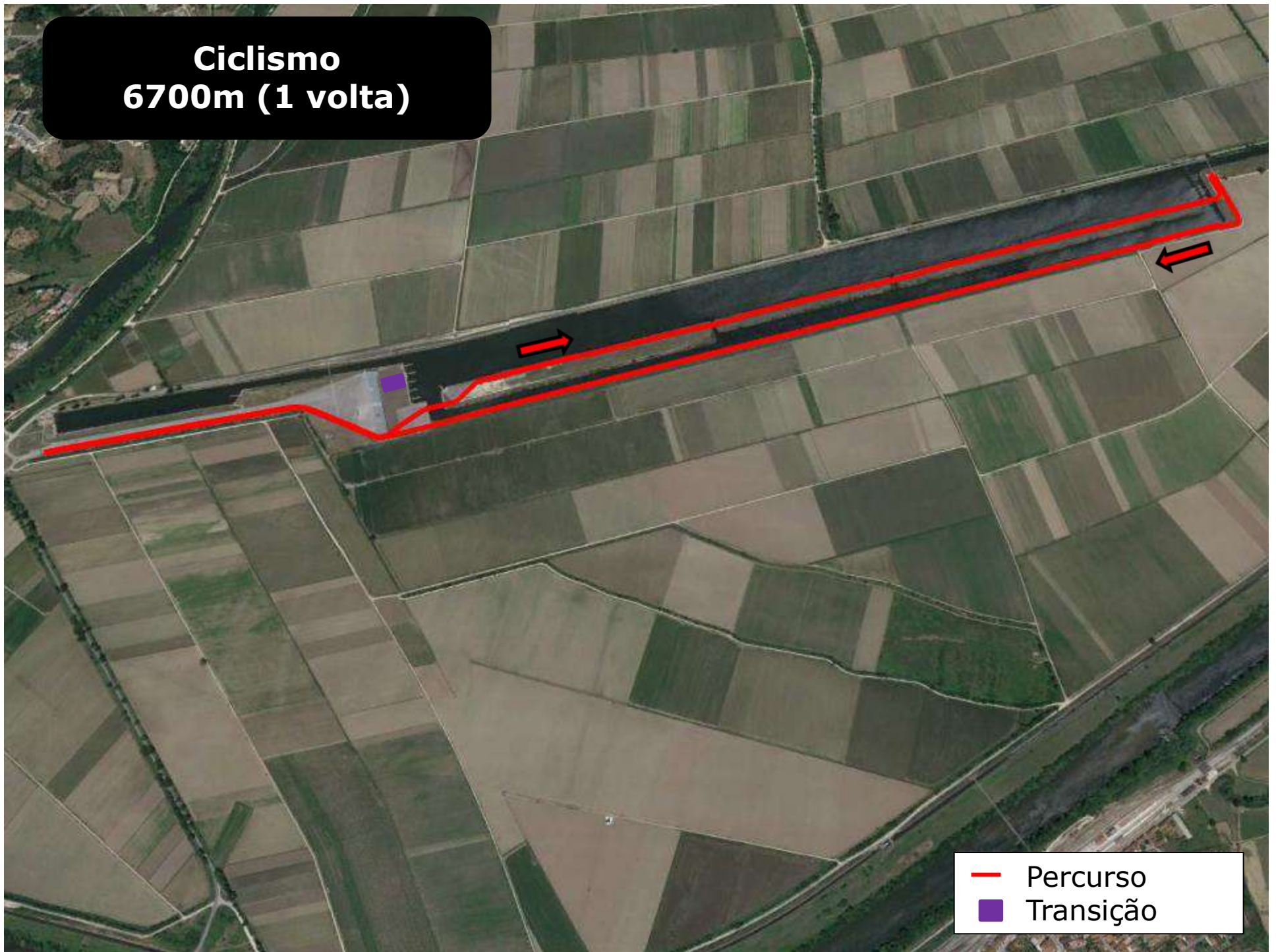


1ª Transição

- Meta
- Natação
- Ciclismo
- Transição



Ciclismo
6700m (1 volta)

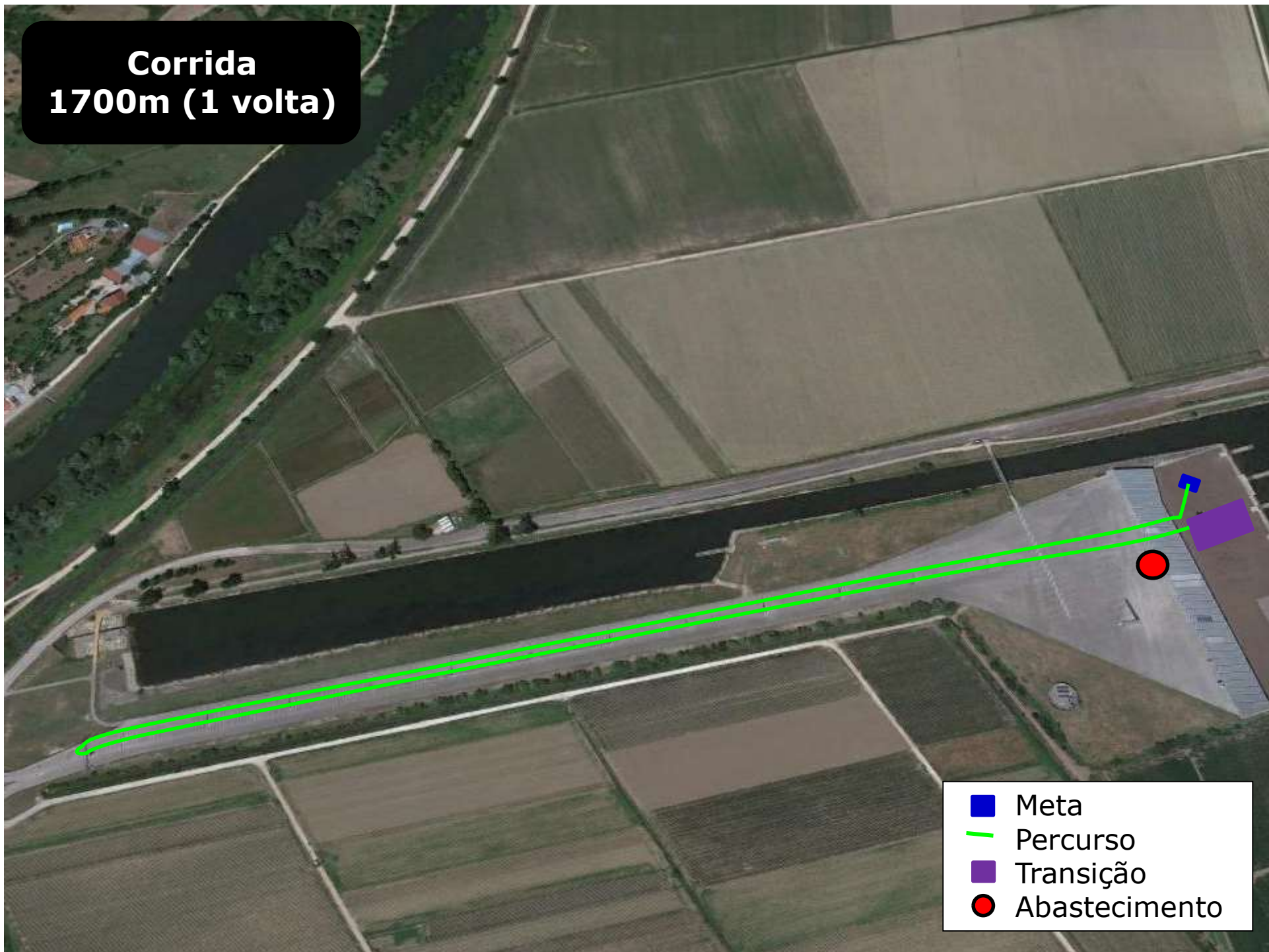


- Percurso
- Transição

2ª Transição

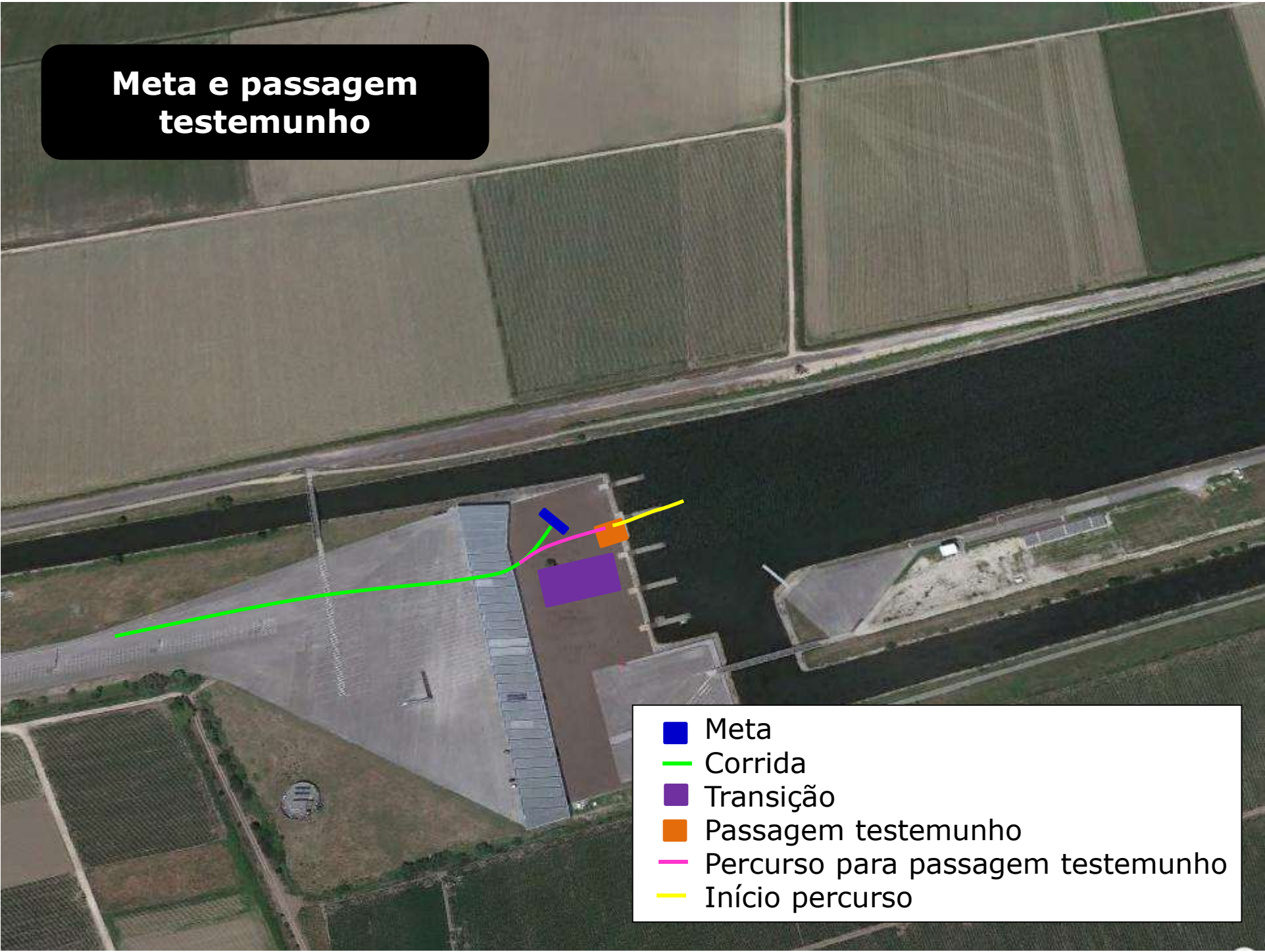
- 
- The image is an aerial photograph of a sports facility, likely a triathlon center, situated next to a large body of water. The facility includes a large grey-roofed building, a paved area, and a smaller structure. A legend in the bottom right corner identifies four key elements: a blue square for 'Meta' (Finish), a red line for 'Ciclismo' (Cycling), a green line for 'Corrida' (Running), and a purple square for 'Transição' (Transition). The red line starts at the transition area and loops around the building. The green line starts at the transition area and extends towards the water. The blue square is located near the transition area. The purple square is also located near the transition area.
- Meta
 - Ciclismo
 - Corrida
 - Transição

**Corrida
1700m (1 volta)**



- Meta
- Percurso
- Transição
- Abastecimento

Meta e passagem testemunho

- 
- Meta
 - Corrida
 - Transição
 - Passagem testemunho
 - Percurso para passagem testemunho
 - Início percurso