



Câmara Municipal de Leiria

www.cm-leiria.pt



FEDERAÇÃO DE
TRIATLO
PORTUGAL



IV TRIATLO de LEIRIA

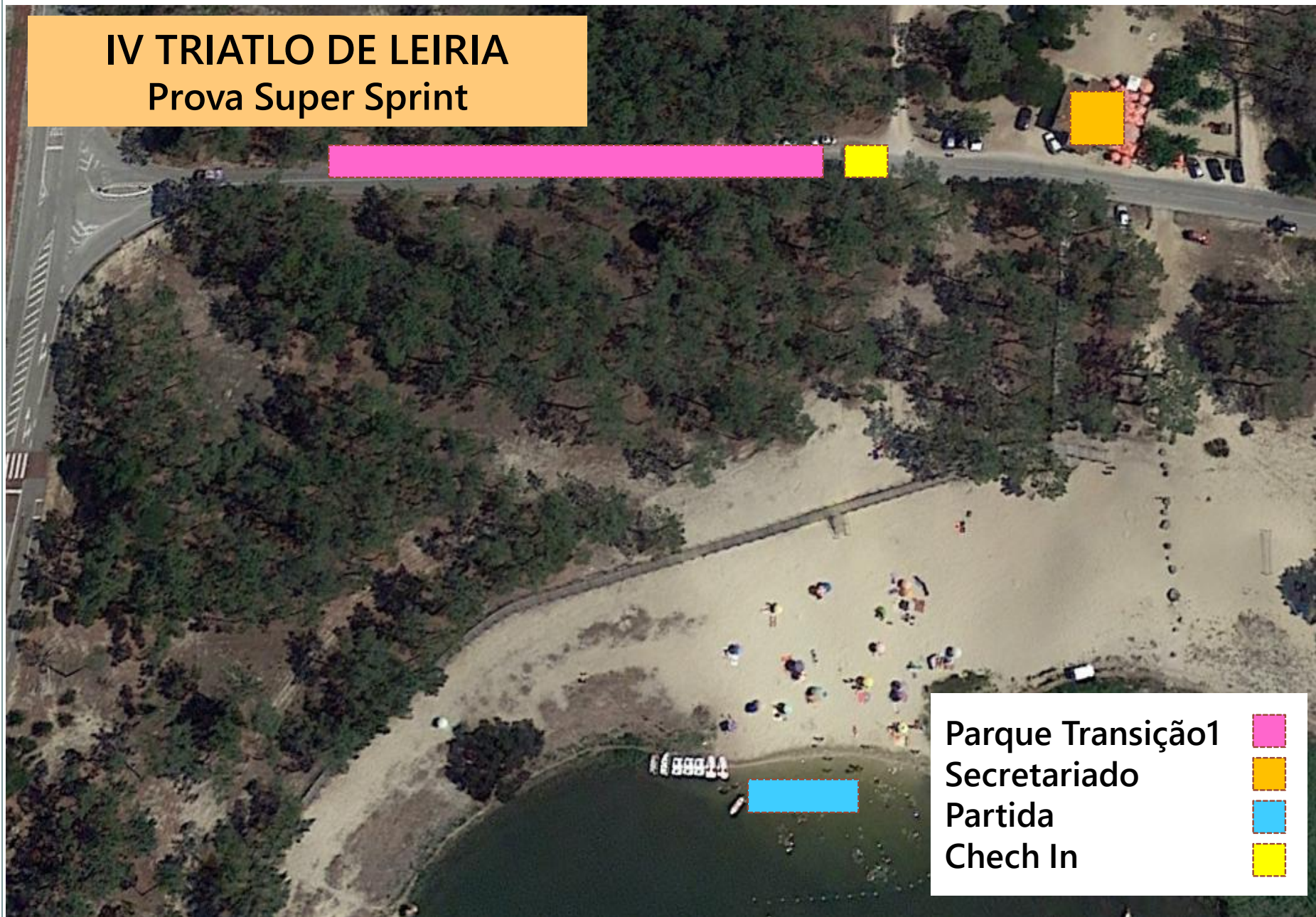
Prova Super Sprint

PERCURSOS

7 Setembro de 2019

IV TRIATLO DE LEIRIA

Prova Super Sprint

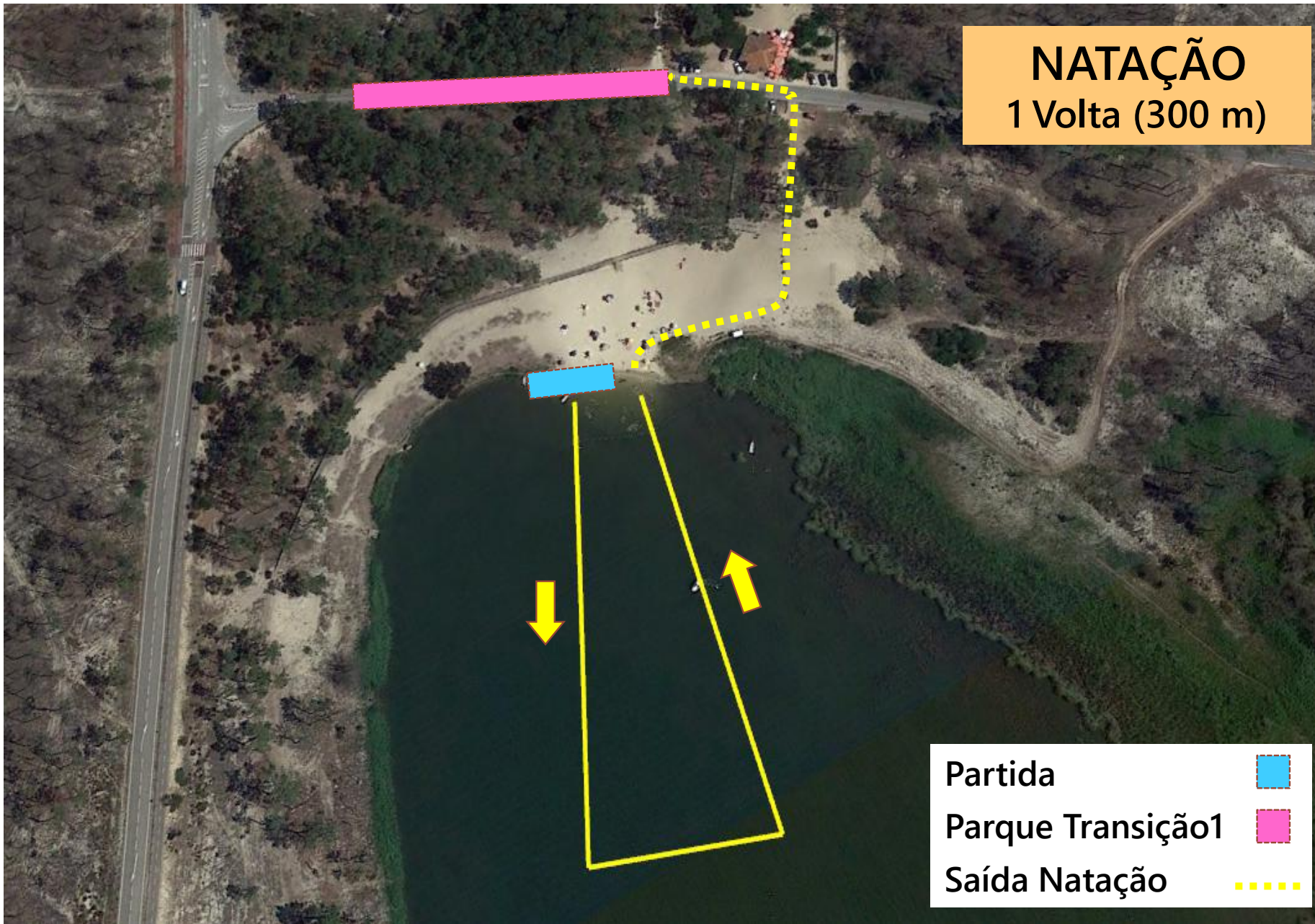





- Parque Transição1
- Secretariado
- Partida
- Check In



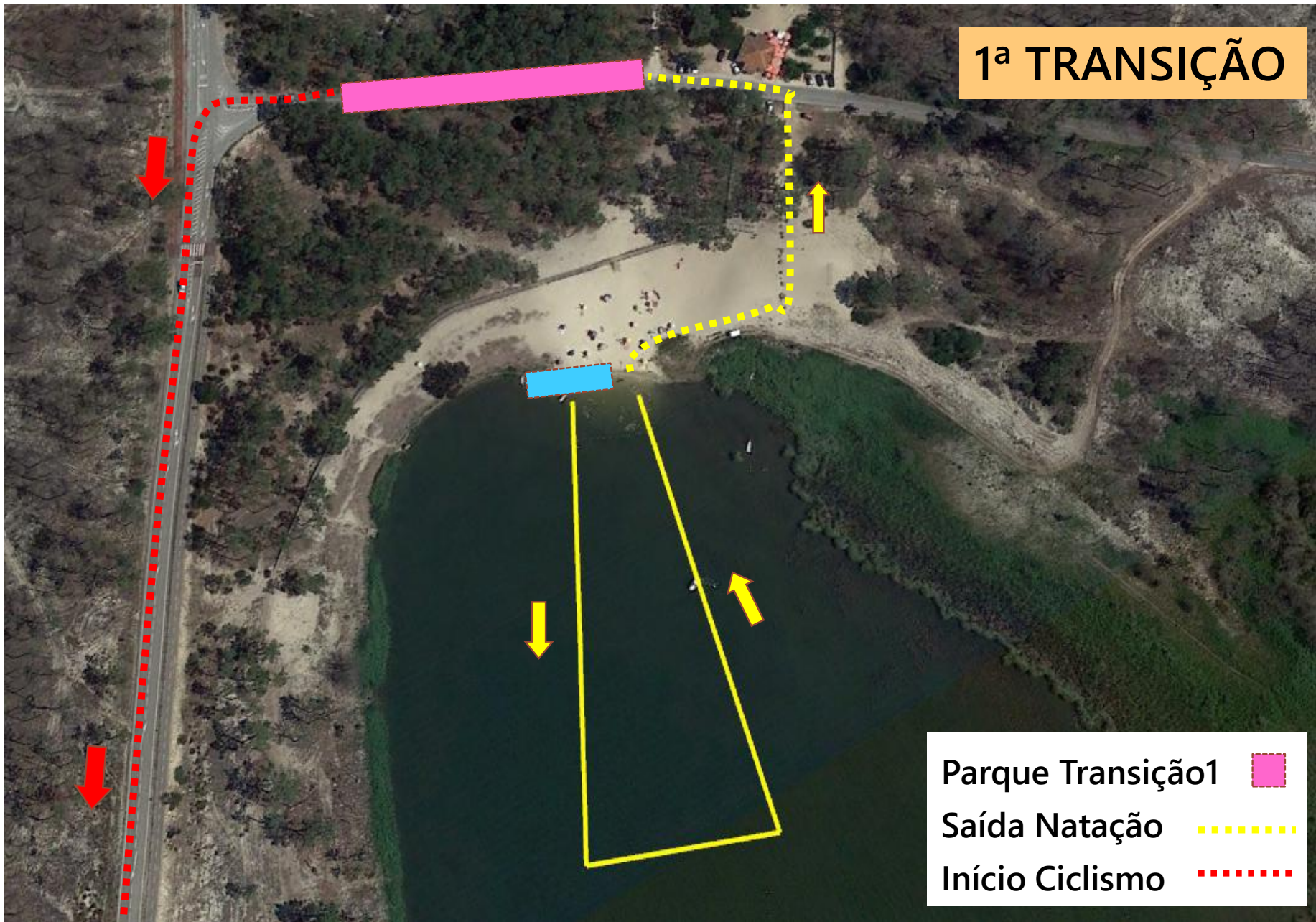
NATAÇÃO




1 Volta (300 m)



- Partida 
- Parque Transição1 
- Saída Natação 

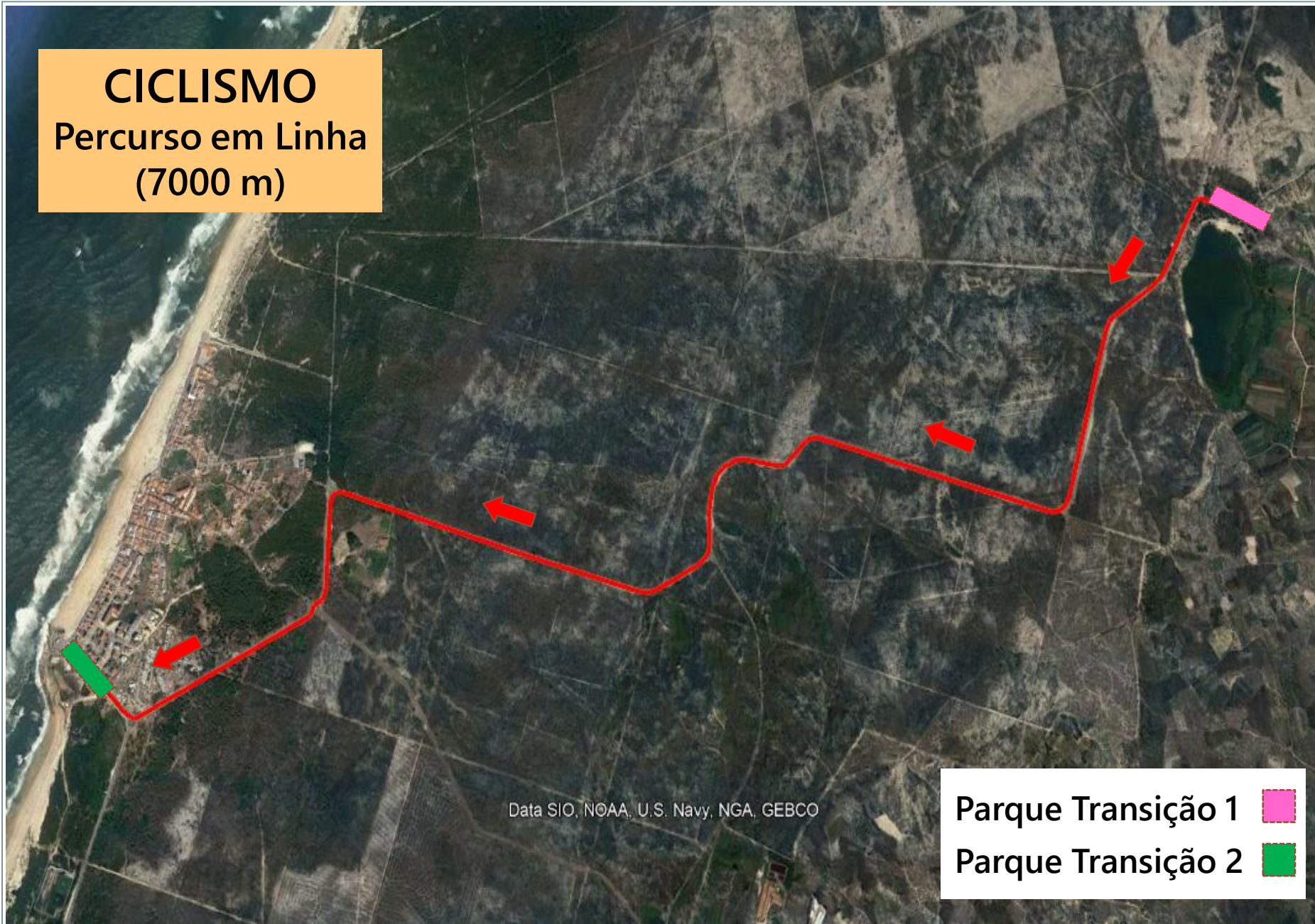
1ª TRANSIÇÃO



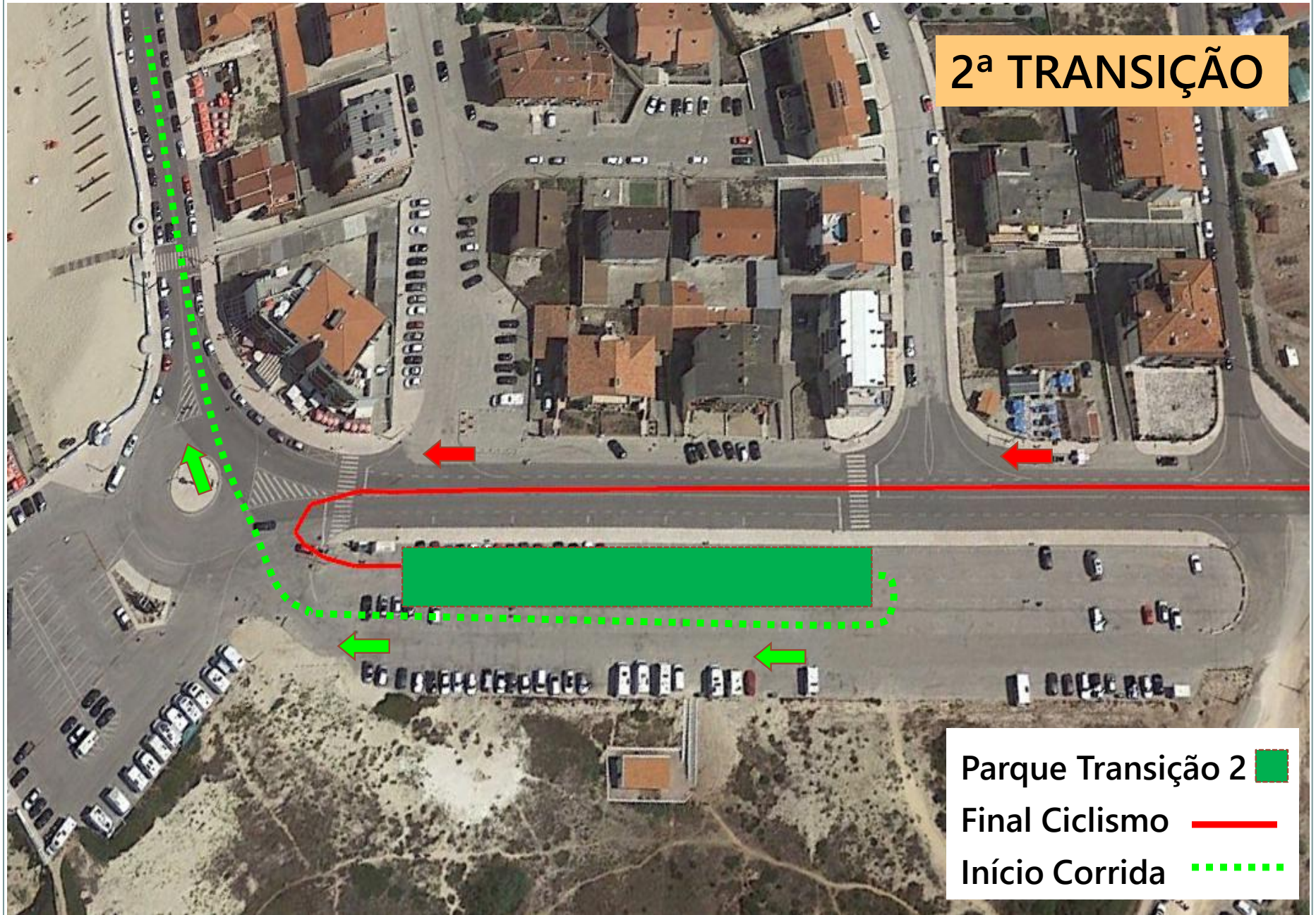
- Parque Transição1 
- Saída Natação 
- Início Ciclismo 

CICLISMO

Percurso em Linha
(7000 m)



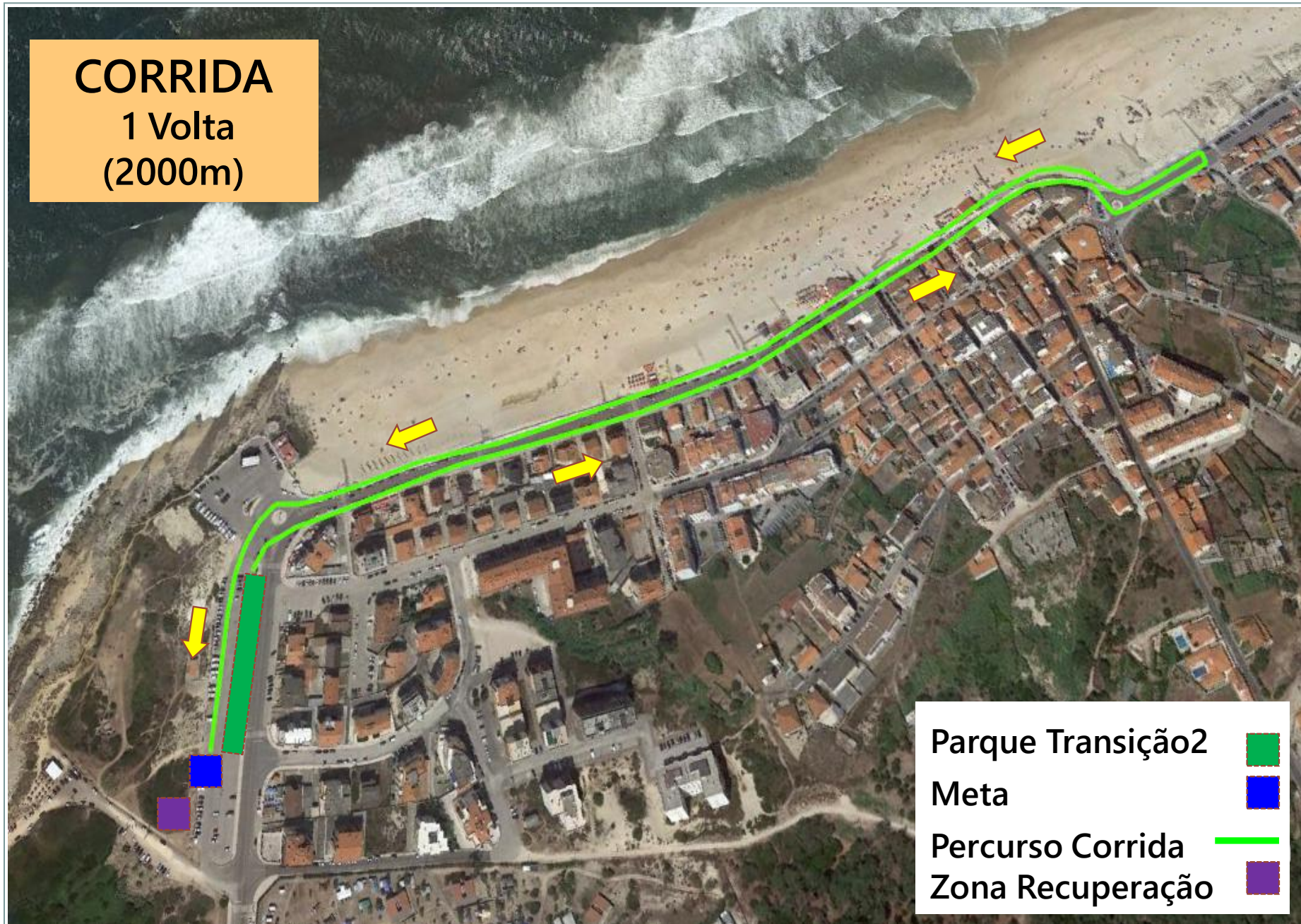
2ª TRANSIÇÃO



- Parque Transição 2 ■
- Final Ciclismo —
- Início Corrida - - - - -

CORRIDA

1 Volta
(2000m)



- Parque Transição2 ■
- Meta ■
- Percurso Corrida —
- Zona Recuperação ■