

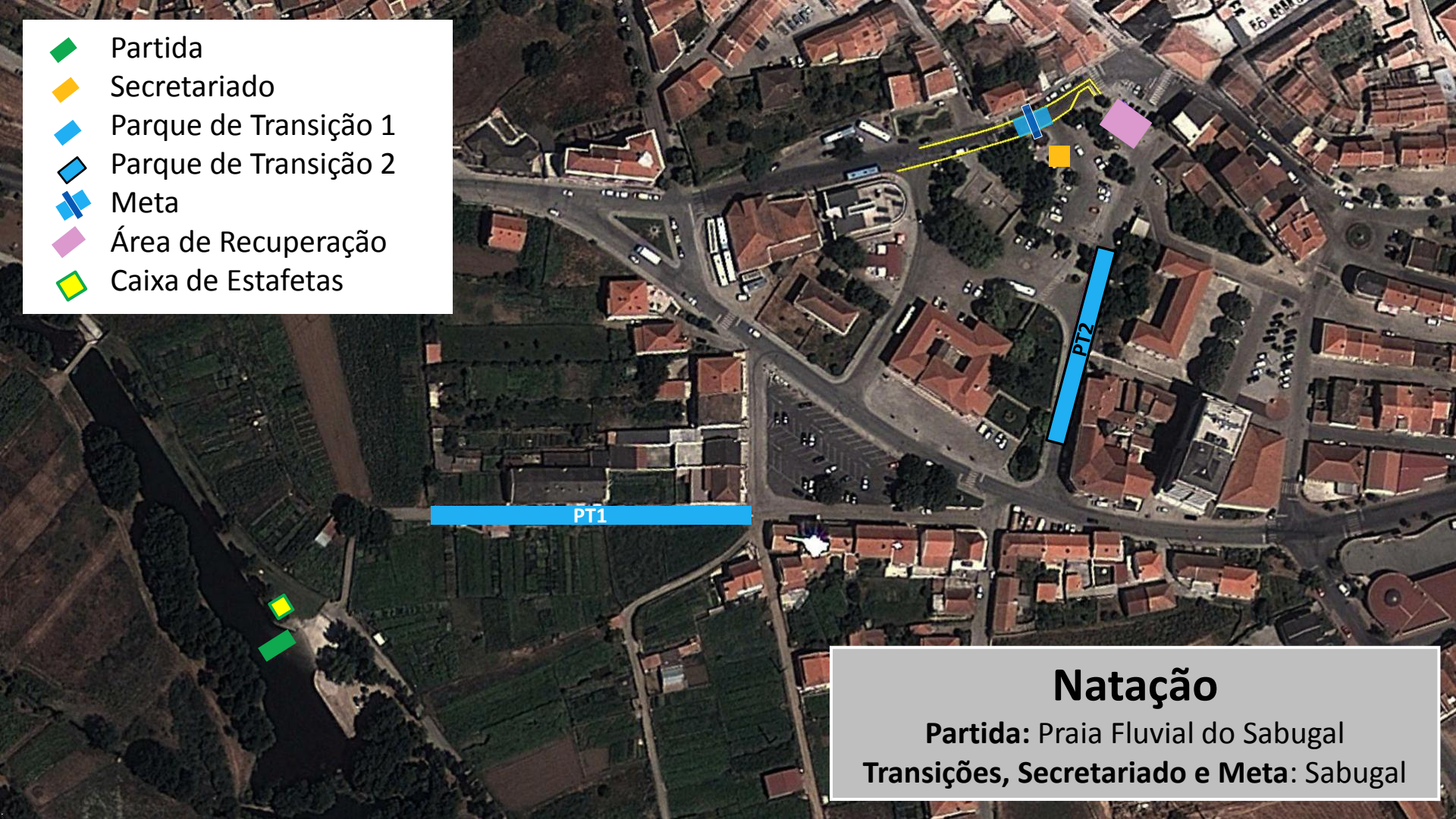
IV Triatlo do Sabugal

Campeonato Nacional de Clubes de Triatlo - Estafetas
(Distância Super-Sprint)



Sabugal

- Partida
- Secretariado
- Parque de Transição 1
- Parque de Transição 2
- Meta
- Área de Recuperação
- Caixa de Estafetas



Natação

Partida: Praia Fluvial do Sabugal
Transições, Secretariado e Meta: Sabugal



PT1

Natação
300m
(1 volta)




- ◆ Partida
- ◆ Parque de Transição 1
- ◆ Caixa de Estafetas



PT1

Natação

Saída de Água

-  Partida
-  Parque de Transição 1
-  Caixa de Estafetas






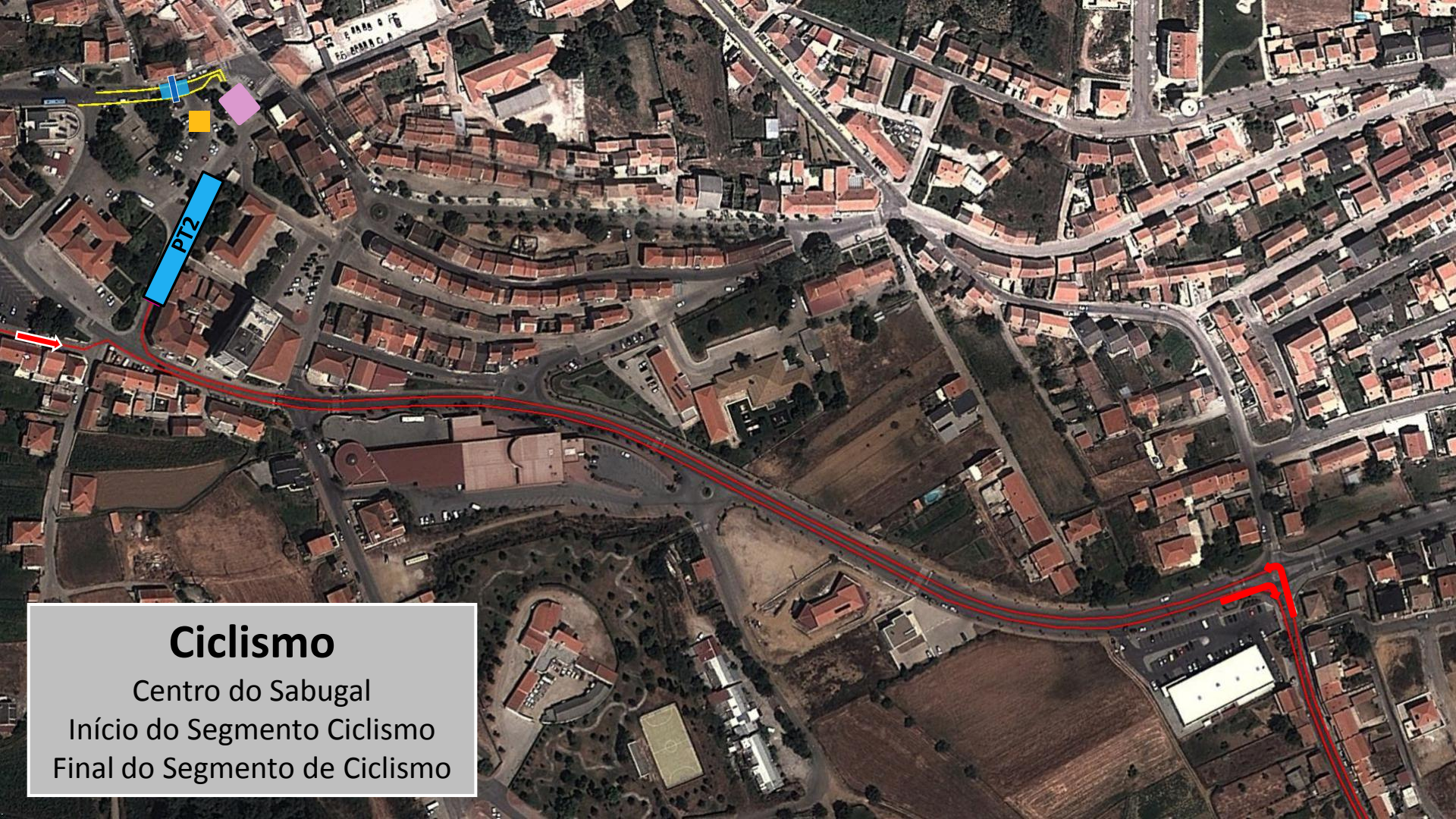
PT1

Natação

Saída de Água

Início do Segmento de Ciclismo

-  Partida
-  Parque de Transição 1
-  Caixa de Estafetas



Ciclismo

Centro do Sabugal

Início do Segmento Ciclismo

Final do Segmento de Ciclismo

Ciclismo

10.000m
(1 volta)

Sabugal



2ª Transição

Final do Ciclismo
Início do Segmento de Corrida



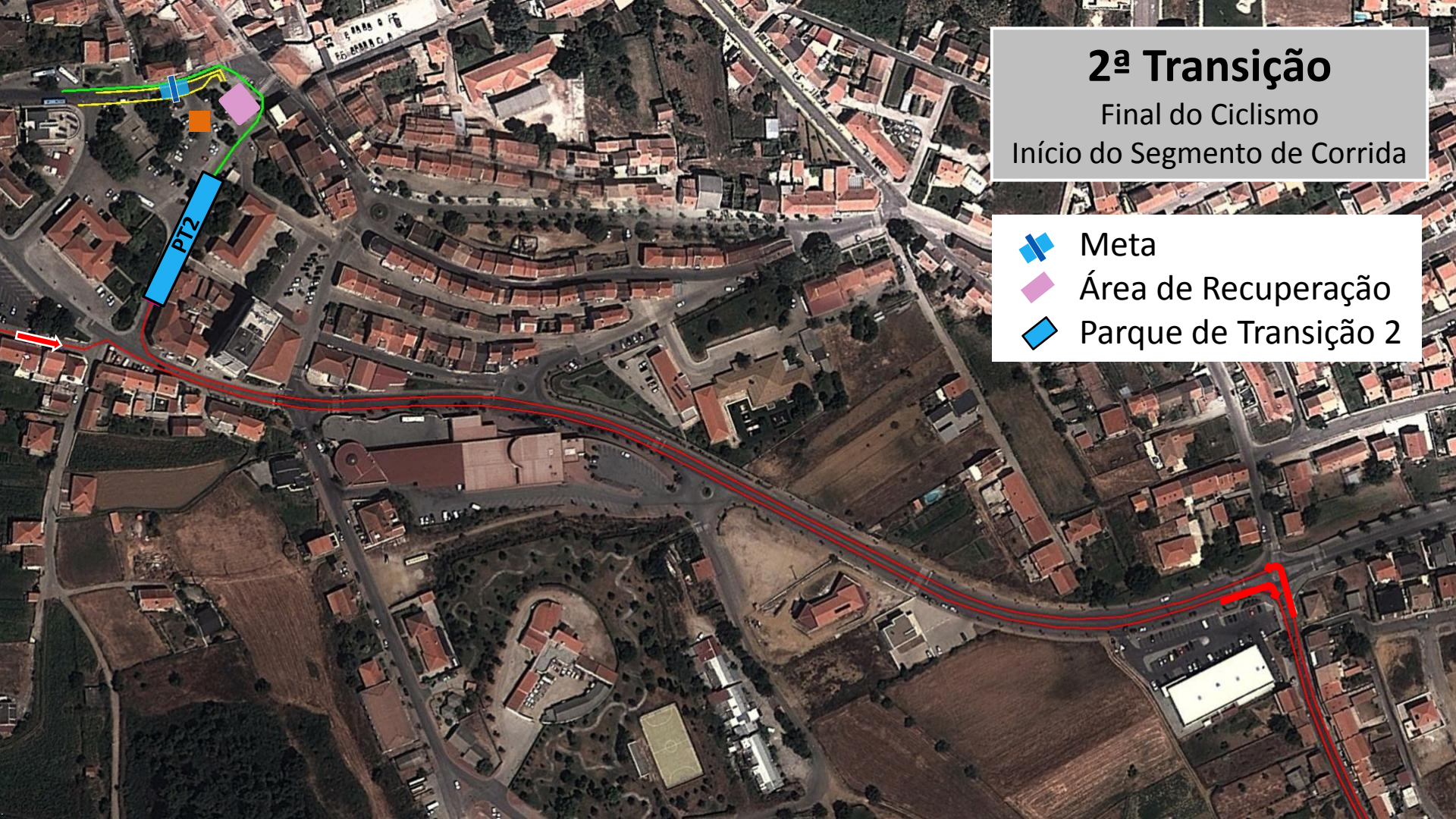
Meta



Área de Recuperação








Parque de Transição 2

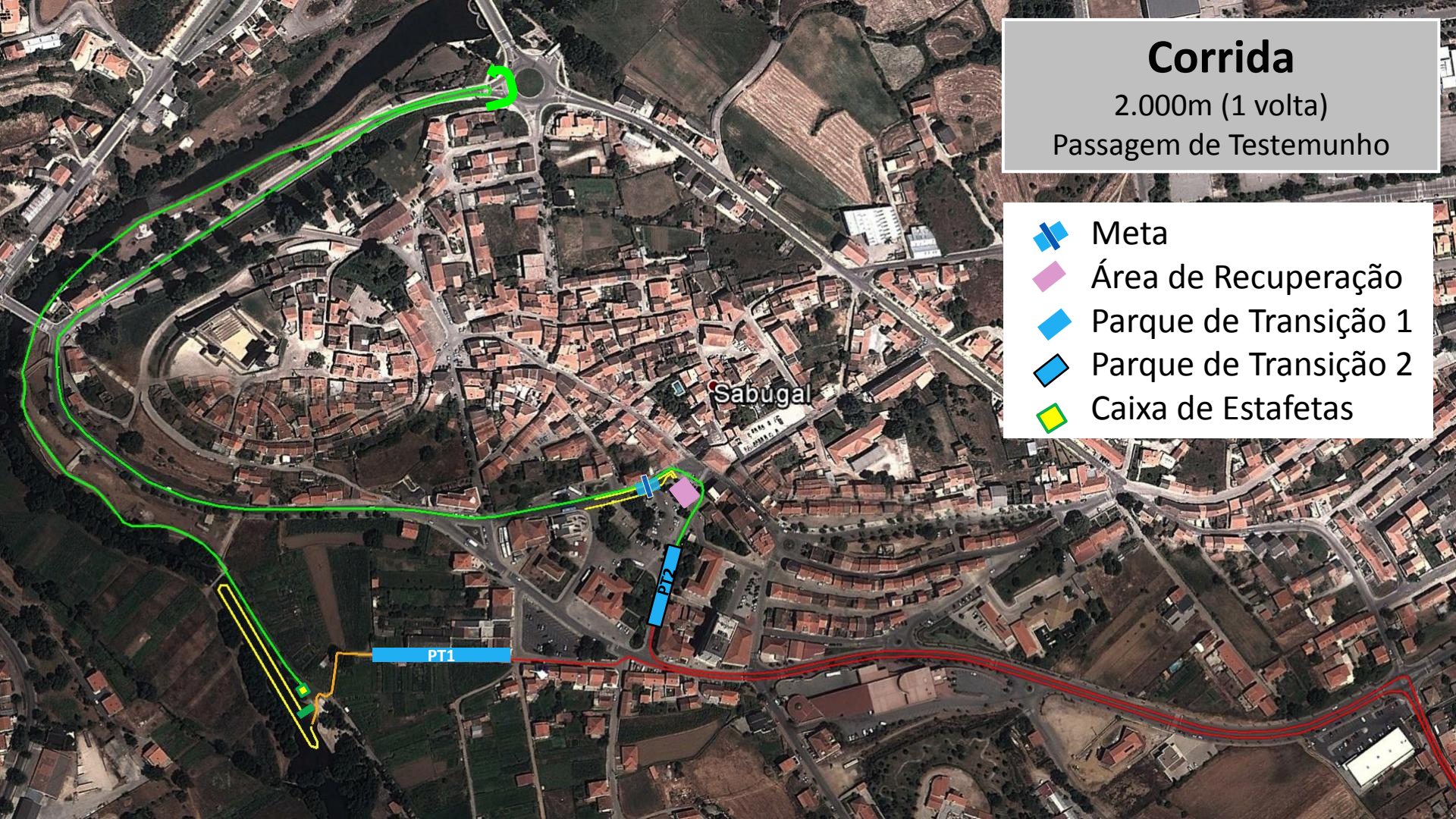


Corrida

2.000m (1 volta)

Passagem de Testemunho

-  Meta
-  Área de Recuperação
-  Parque de Transição 1
-  Parque de Transição 2
-  Caixa de Estafetas



Corrida

2.000m (1 volta)

Passagem de Testemunho

PT1

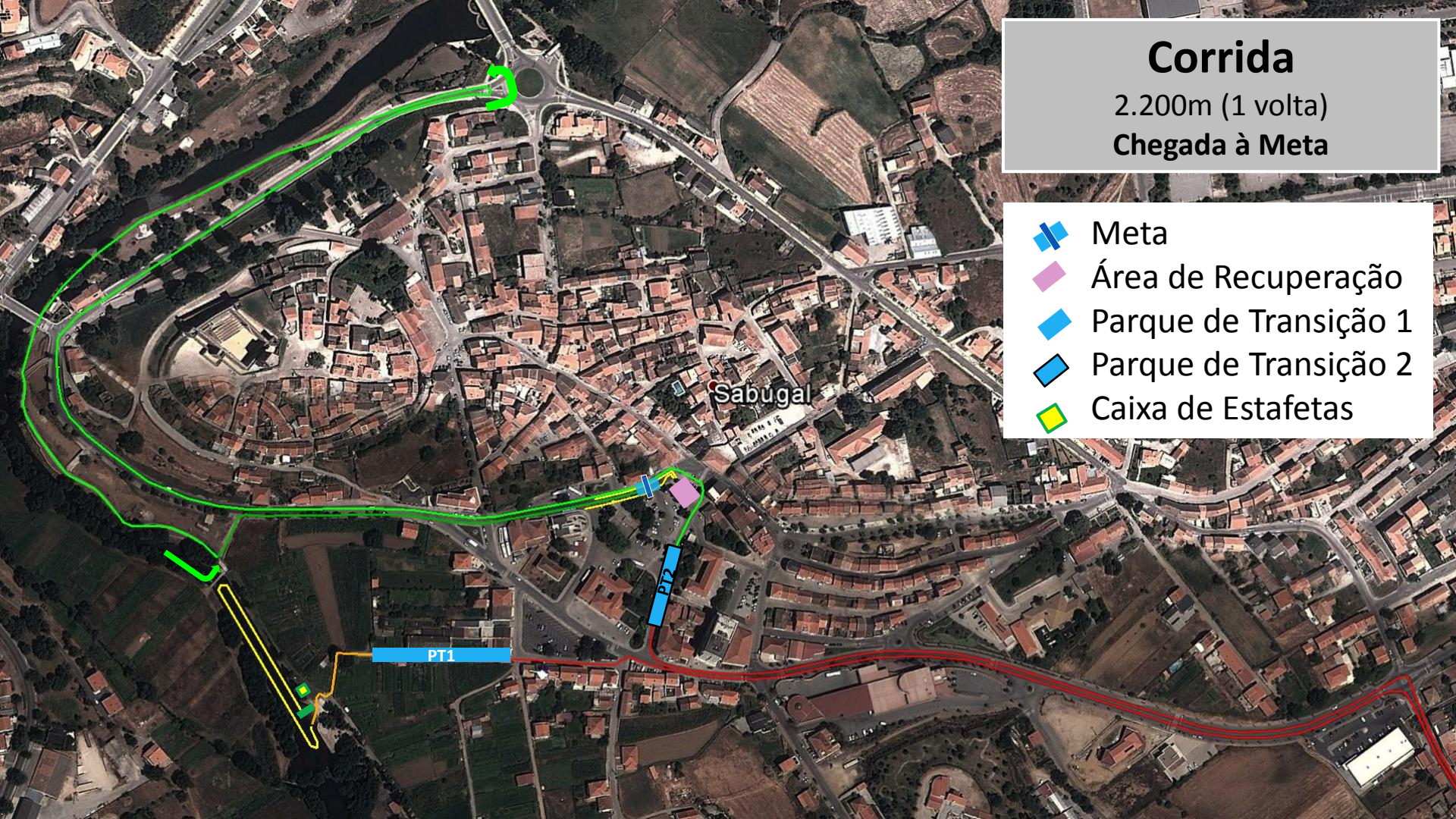
An aerial photograph of a residential and agricultural area. A yellow path is drawn on the map, starting from a yellow arrow at the top left, following a road and then a path through fields and trees, ending at a yellow arrow at the bottom. A green path is also drawn, starting from a green arrow at the top left, following a road and then a path through fields and trees, ending at a green arrow at the bottom. A blue rectangular marker labeled 'PT1' is positioned on a road in the middle of the map. A red line is visible on the right side of the map, possibly indicating a boundary or a specific road.

Corrida

2.200m (1 volta)

Chegada à Meta

- Meta
- Área de Recuperação
- Parque de Transição 1
- Parque de Transição 2
- Caixa de Estafetas



Corrida

2.200m (1 volta)

Chegada à Meta



Meta



Área de Recuperação



Parque de Transição 2



Secretariado

PT2