
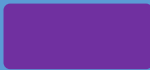


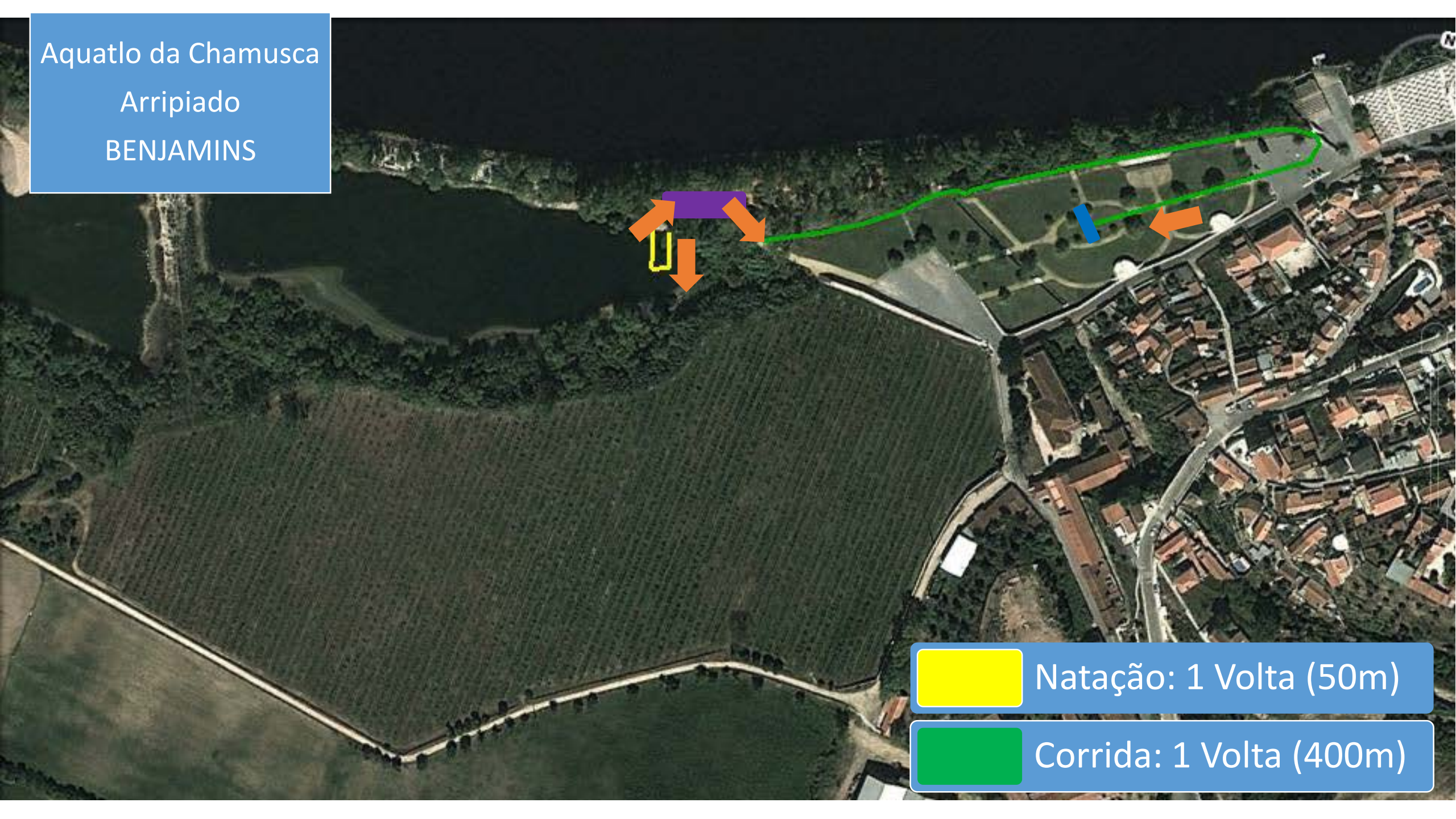


Aquatlo da Chamusca
Arripiado
Campeonato Nacional Jovem

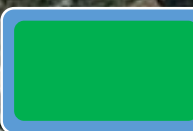


-  Secretariado
-  Parque de Transição
-  Meta
-  Tendas de Recobro

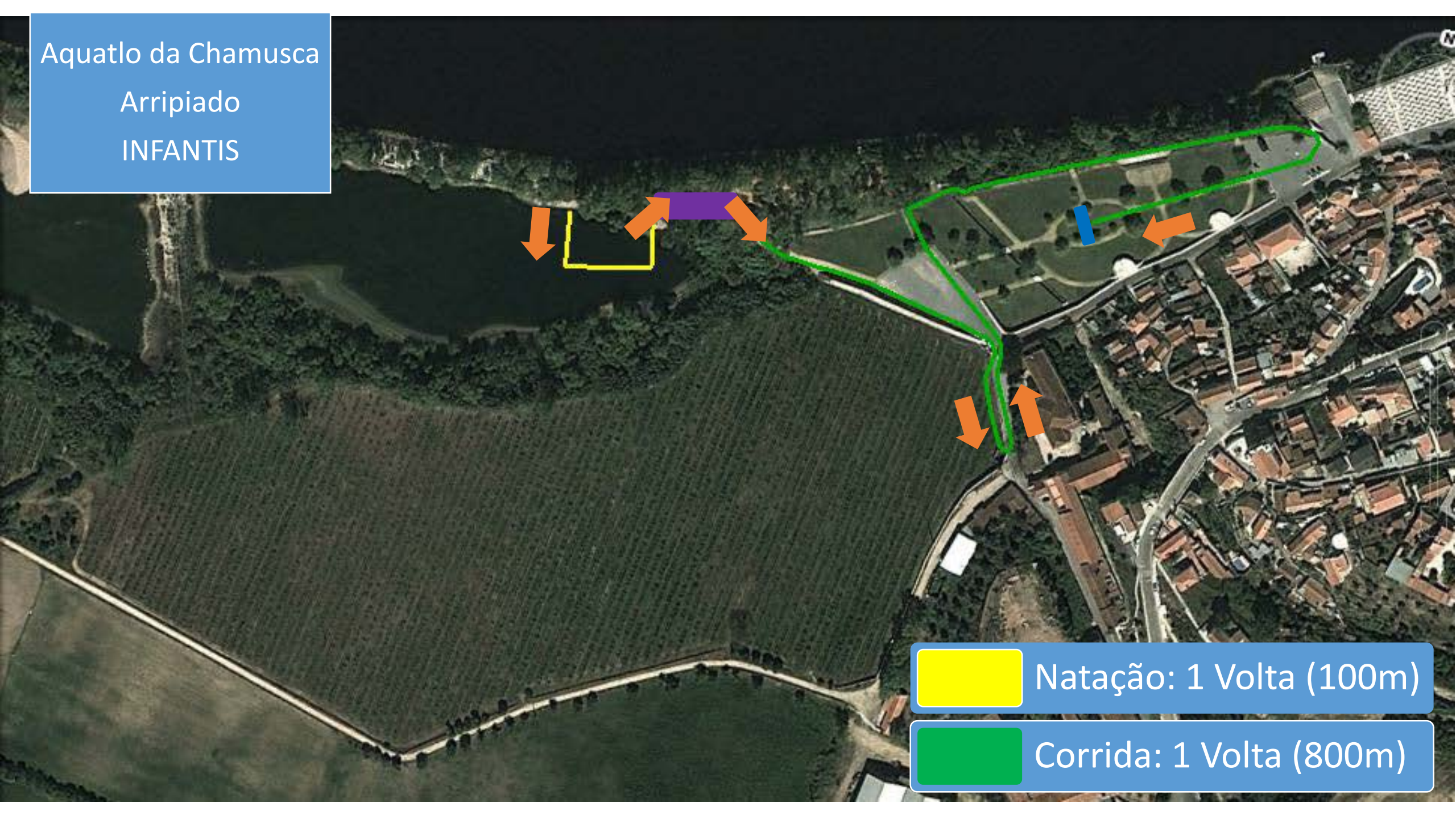
Aquatlo da Chamusca
Arripiado
BENJAMINS



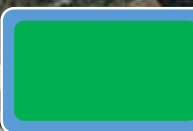
 Natação: 1 Volta (50m)

 Corrida: 1 Volta (400m)

Aquatlo da Chamusca
Arripiado
INFANTIS



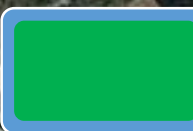
 Natação: 1 Volta (100m)

 Corrida: 1 Volta (800m)

Aquatlo da Chamusca
Arripiado
INICIADOS



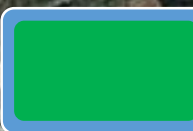
 Natação: 1 Volta (200m)

 Corrida: 1 Volta (1000m)

Aquatlo da Chamusca
Arripiado
JUVENIS



 Natação: 1 Volta (300m)

 Corrida: 1 Volta (2000m)