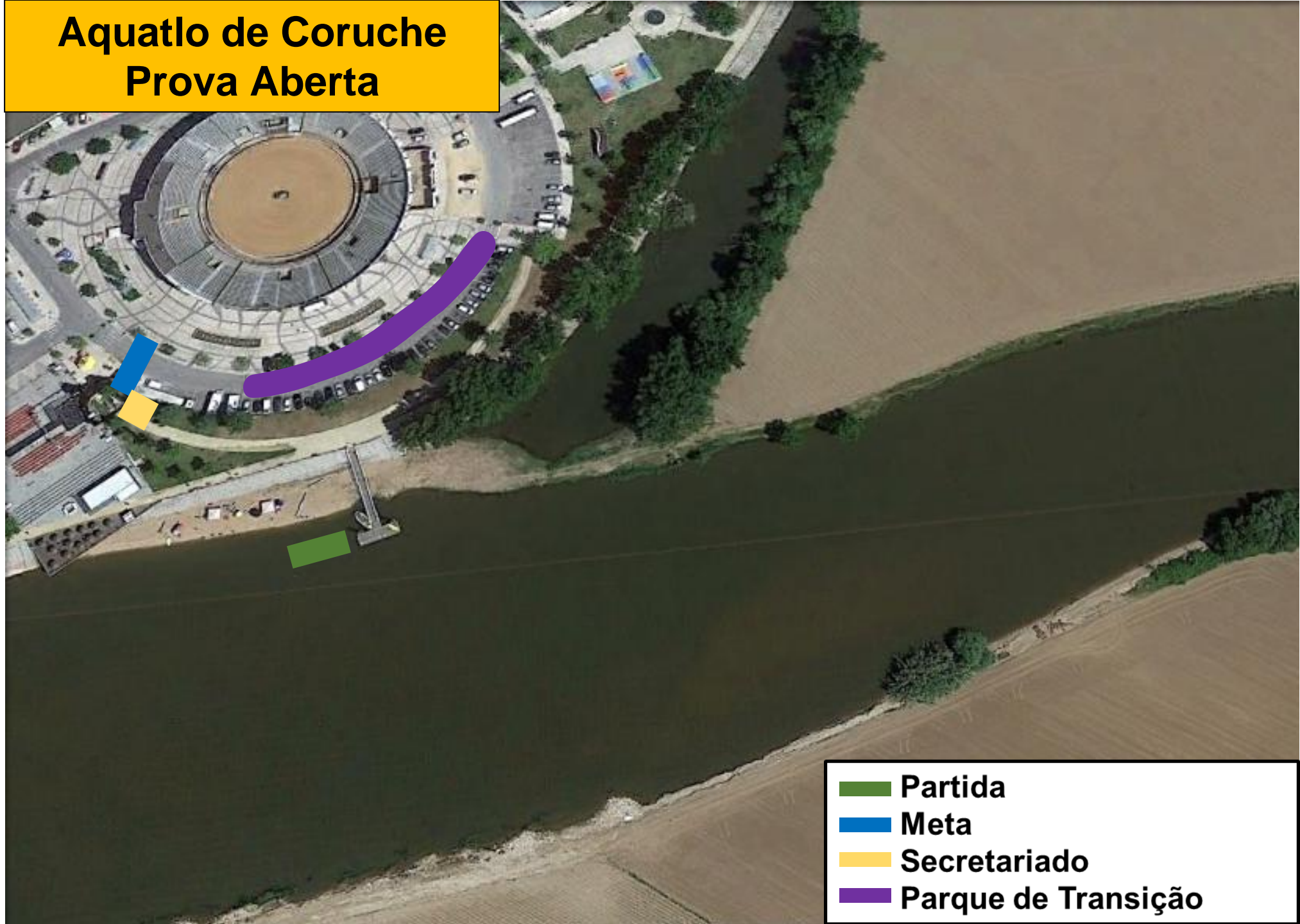






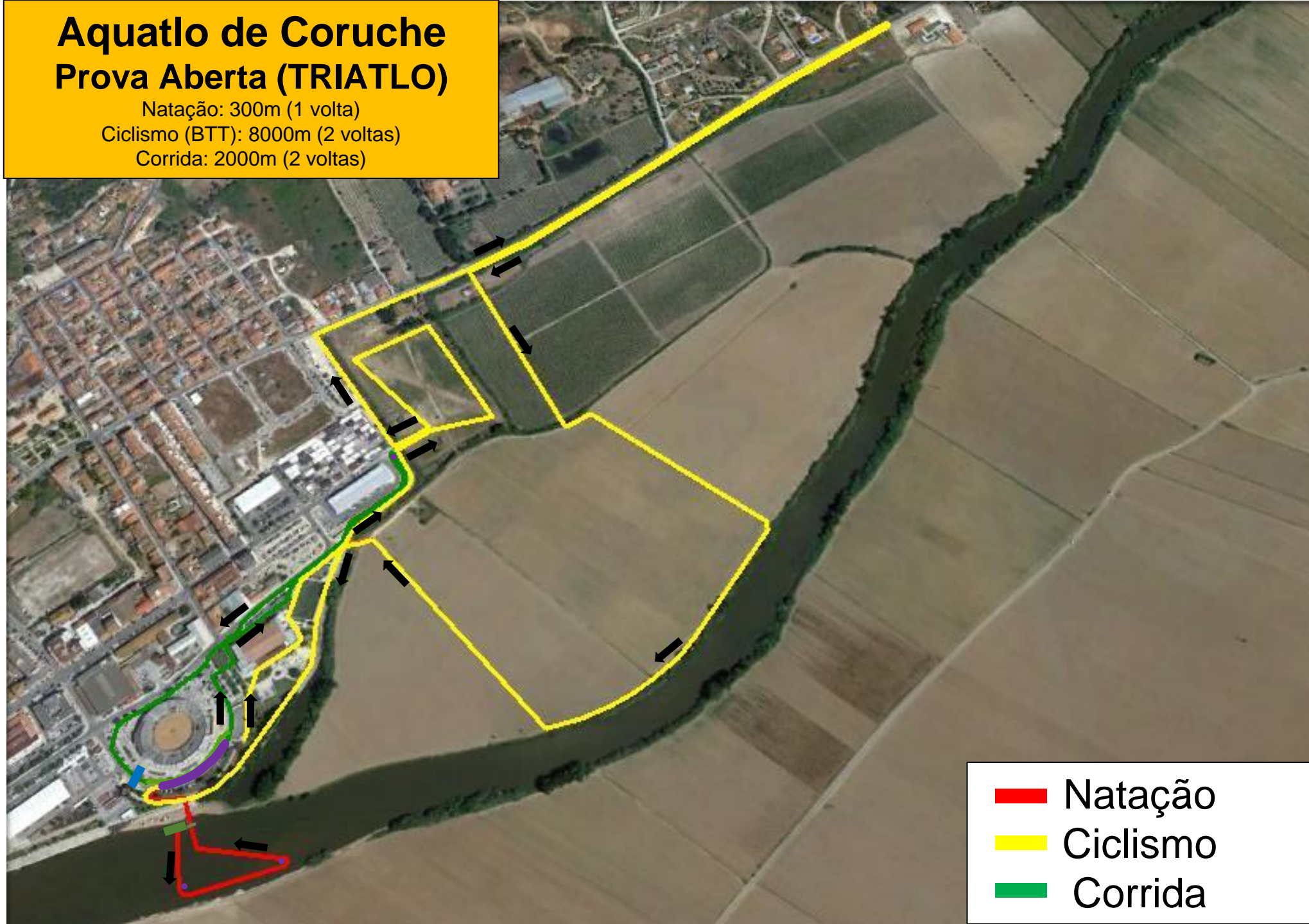
Aquatlo de Coruche Prova Aberta



-  Partida
-  Meta
-  Secretariado
-  Parque de Transição

Aquatlo de Coruche Prova Aberta (TRIATLO)

Natação: 300m (1 volta)
Ciclismo (BTT): 8000m (2 voltas)
Corrida: 2000m (2 voltas)

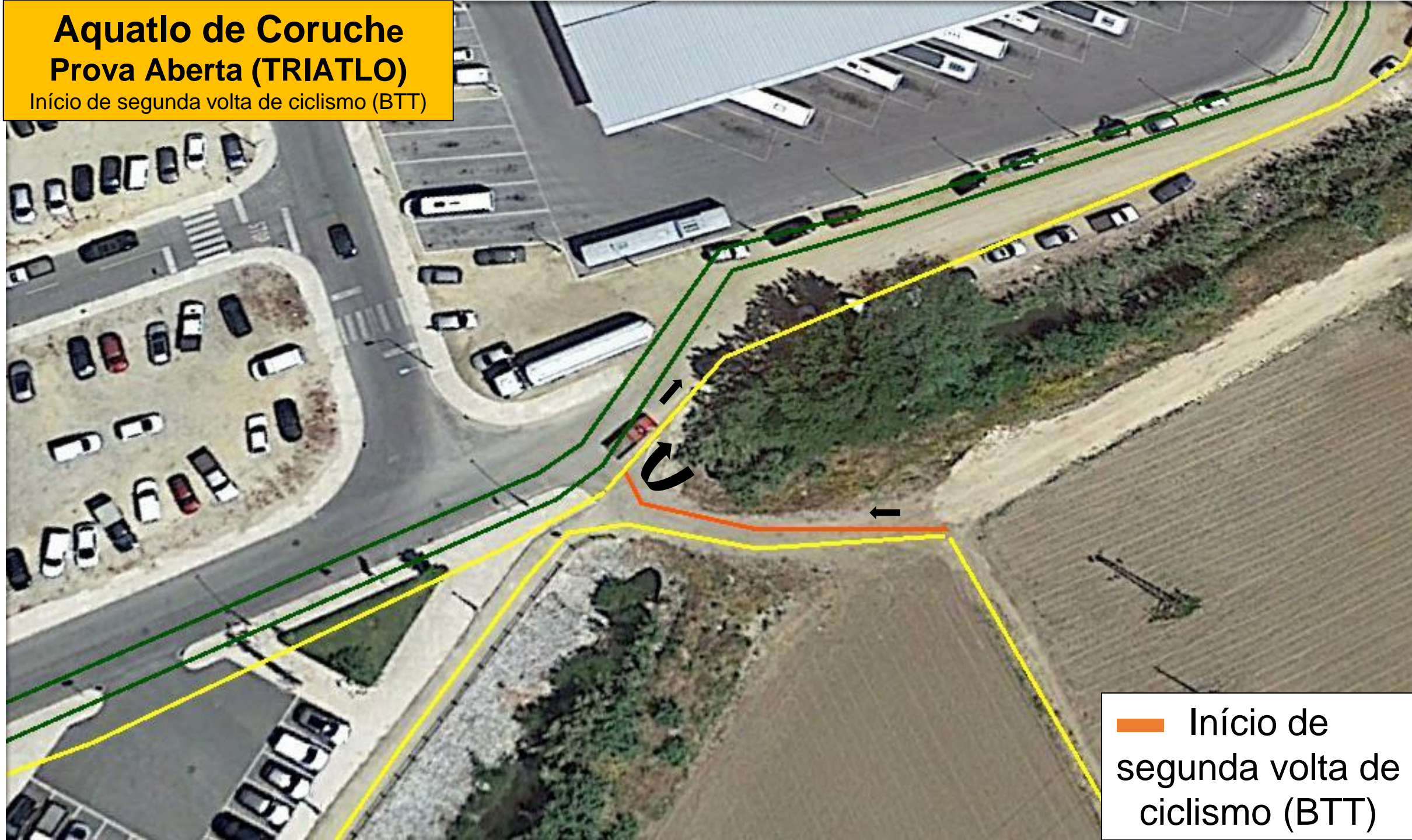


- Natação
- Ciclismo
- Corrida

Aquatlo de Coruche

Prova Aberta (TRIATLO)

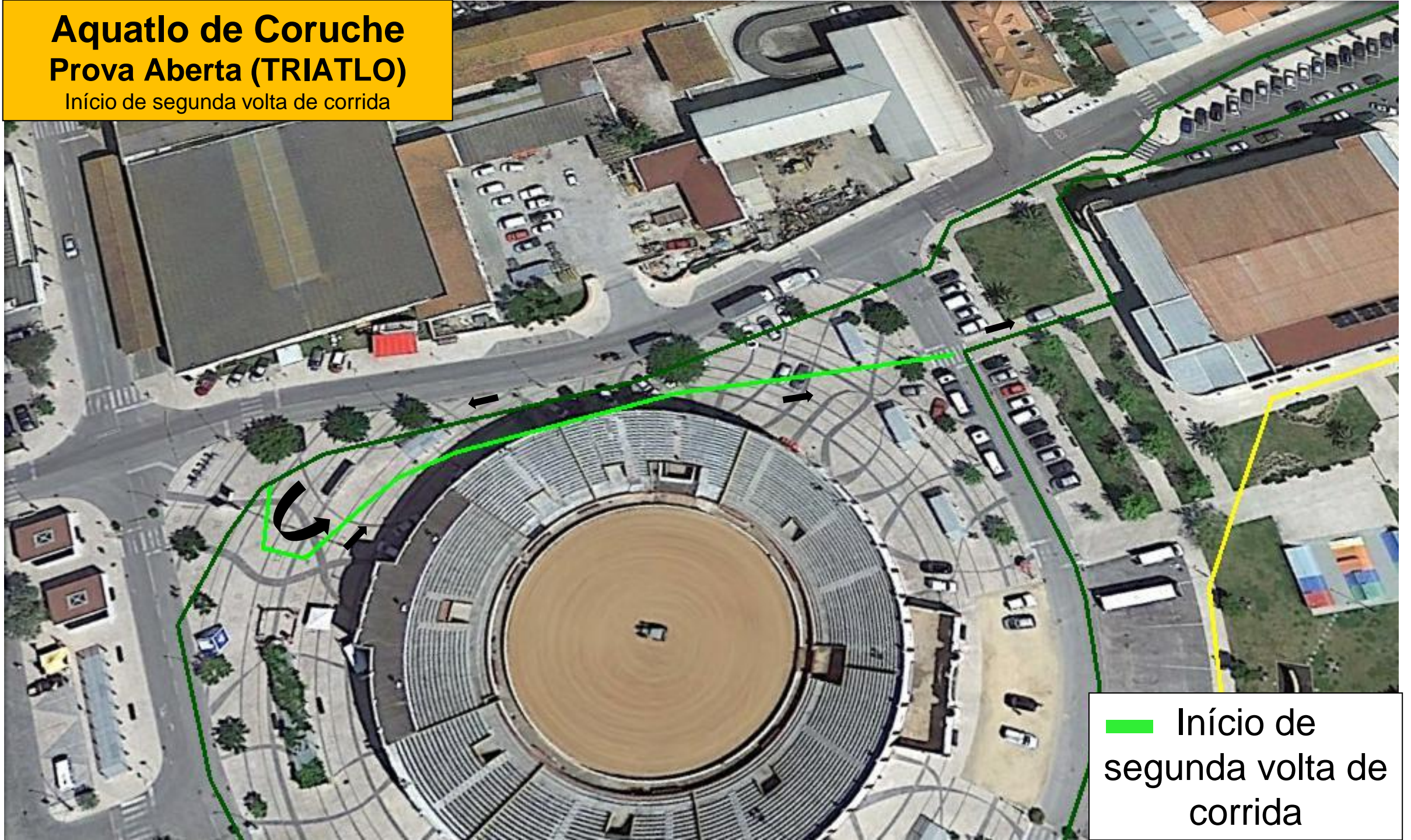
Início de segunda volta de ciclismo (BTT)




— Início de segunda volta de ciclismo (BTT)

Aquatlo de Coruche Prova Aberta (TRIATLO)

Início de segunda volta de corrida



 Início de
segunda volta de
corrida