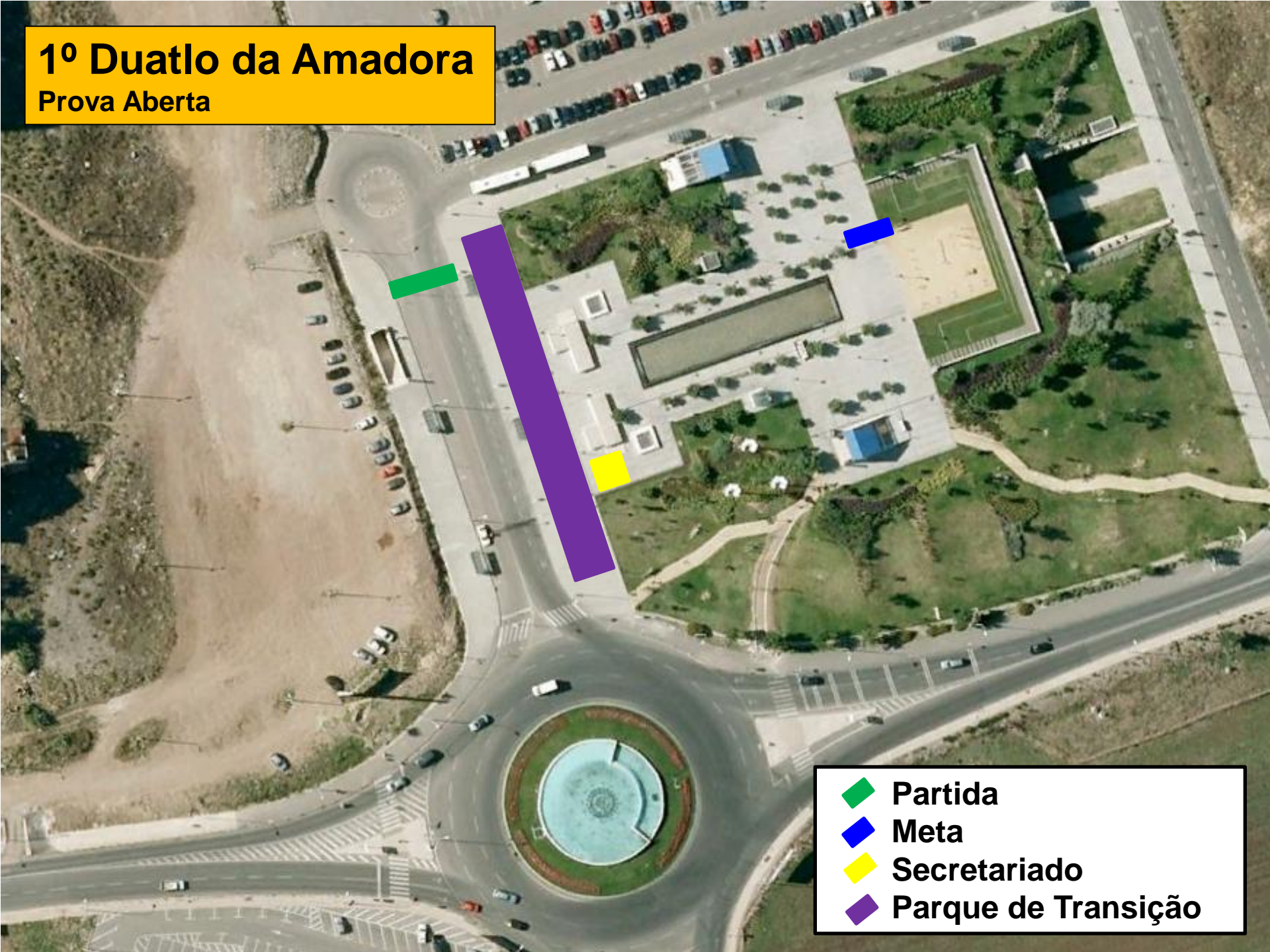



1º Duatlo da Amadora




Prova Aberta



-  Partida
-  Meta
-  Secretariado
-  Parque de Transição




1ª Corrida – 1ª volta
2 voltas – 5000m



-  Partida
-  Transição
-  Percurso 2ª volta

1ª Corrida – 2ª volta
2 voltas – 5000m



-  Partida
-  Transição
-  Percurso 2ª volta

1ª Transição



- ◆ Parque de Transição
- Final Corrida
- Início Ciclismo

Ciclismo

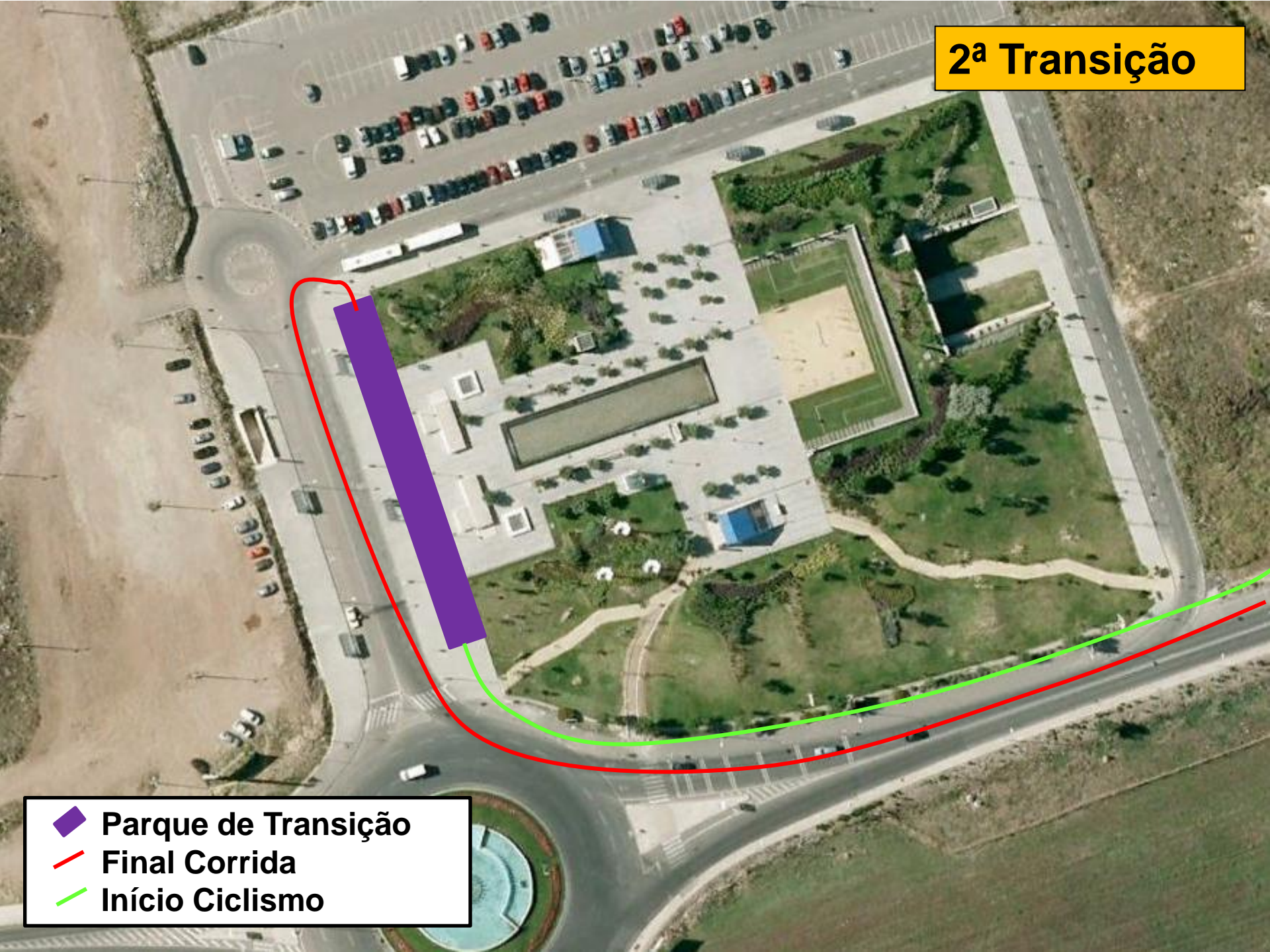
4 voltas: 19200m



Transição
Percurso

2ª Transição


-  Parque de Transição
-  Final Corrida
-  Início Ciclismo



2ª Corrida

1 volta – 2500m



	PT
	Meta
	Percurso